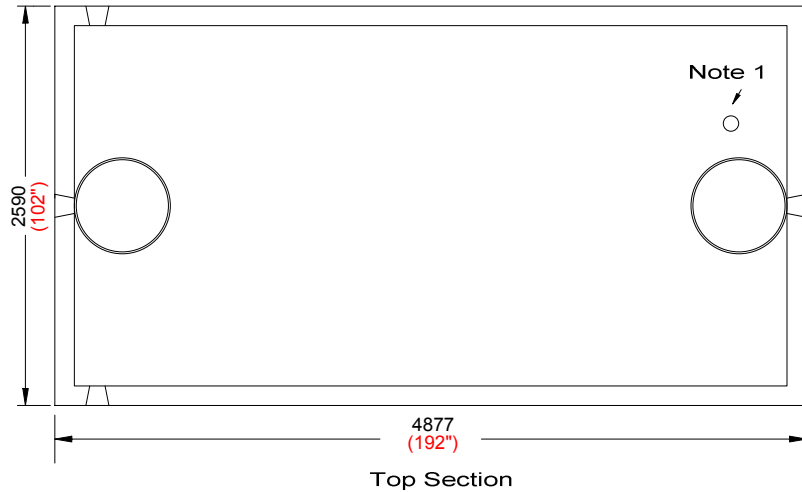


NEWMARKET PRE-CAST CONCRETE PRODUCTS

Telephone: 905-852-6111 ; Toll Free 1-800-263-1297

Model 27500 (6000) Holding Tank - 2 Piece Unit

Working Capacity 28259 Litres (6216 GAL.)



- This tank design is installed in multiple units
- Each unit is tongue and groove design and is sealed with fibrous mastic sealant
- tanks are cast with 35 MPA strength concrete at 7 days with 5-7% air
- Steel reinforced with 10m rebar, spaced at 400mm in each direction at 25mm cover. CAN/CSA-G30.18.
- Tanks conform to National Standards of Canada CAN/CSA B66-16
- Non-sulphate resistant concrete
- Standard three 100mm Inlets and one 100mm outlet fitted with flexible rubber connections

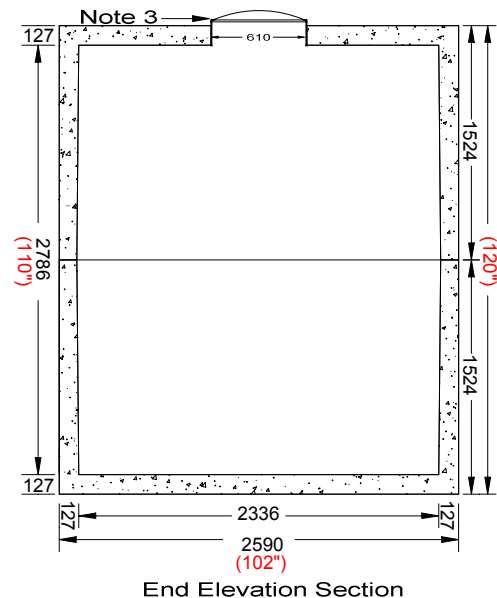
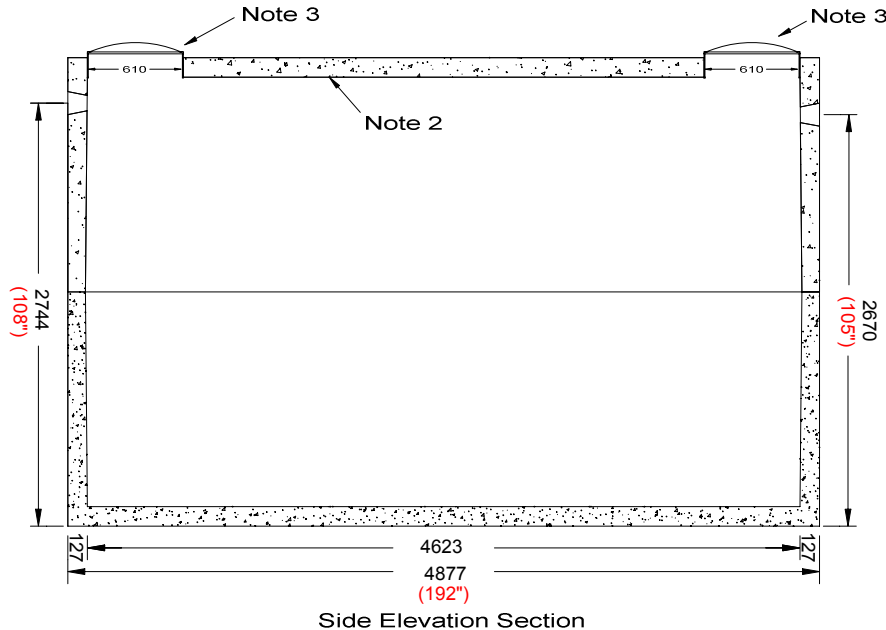
Top Half Weight..... 8954 Kg (19,740 Lbs)
 Bottom Half Weight..... 8954 Kg (19,740 Lbs)
 Total Tank Weight..... 17,908 Kg (39,480 Lbs)

Notes

1. 75mm dia. PVC pipe cast-in to facilitate pump installation or venting
2. Water Storage Capacity to underside of top..... **30,881 Litres (6793 Gal)**
3. Cast in place 610mm ID plastic riser with plastic lid secured with stainless steel fasteners extending 25mm above top

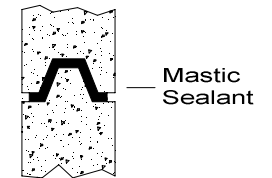
Designed for up to one metre burial over top of tank - Deep burial and vehicle traffic tanks are available upon request. Specialty conformations may be possible

To ensure a water-tight seal, seams must be cemented both inside and out



Tank markings observed:
Inlet & outlet.

NPCP
 2017 HOLDING 27500
 B.D. 2 METRE
 WC 28259
 NON-SULPHATE
 AGINP



Tongue and Groove Joint