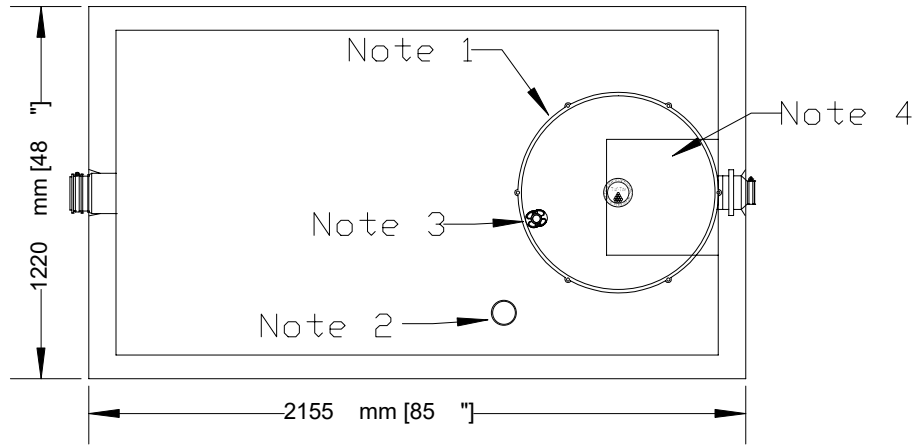


# NEWMARKET PRE-CAST CONCRETE PRODUCTS

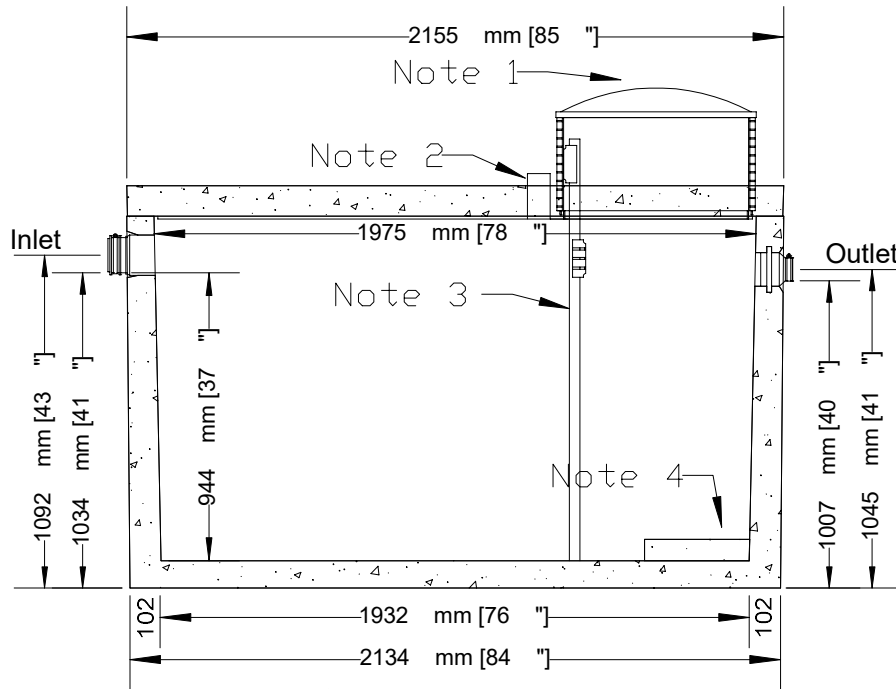
Telephone: 905-852-6111 ; Toll Free 1-800-263-1297

## MODEL 2250 (500) PUMPING CHAMBER

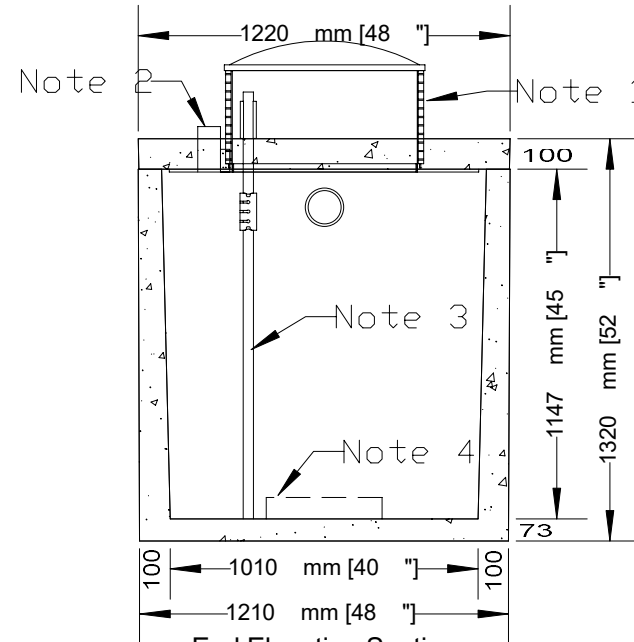
Working Capacity..... 1862 Lt. (410 GAL.)



Top Section



Side Elevation Section



End Elevation Section

- Design shown is a one piece unit. The top is sealed with a fibrous mastic sealant
- Tanks are cast with 35 MPA strength concrete at 7 days with 5-7% air
- Tank reinforcement:
  - Walls - one continuous 10m rebar placed at top of wall.
  - Roof slab - 10m premanufactured welded wire placed at 200mm nominal spacing long axis & 330mm nominal spacing short axis
- Inlet fitted with a 100mm rubber fitting
- Outlet fitted with a 50mm rubber fitting
- 3kg structural fiber added to concrete
- Tanks conform to National Standards of Canada CAN/CSA B66-16
- Non sulphate resistant concrete

Tank Weight.....2625 Kg (5787 lb)

Notes:

1. Cast in place 610mm ID Tuf-tite Riser with Dome Cover extending 255mm above top of tank.
2. 75mm diameter PVC pipe cast in to facilitate pump Installation or Venting
3. 25mm Float Tree mounted to riser
4. 390mm x 400mm Pad 75mm high cast into tank for pump

Designed for up to one metre burial over top of tank - vehicle traffic and up to two metre burial tanks are available upon request

Tank markings observed:  
Inlet & outlet  
Marked on tank top

<p><b>NPCP</b> 2016 PUMP TANK 2250 L B.D. 1 METRE WC 1862 NON SUPHATE AGINP</p>
---