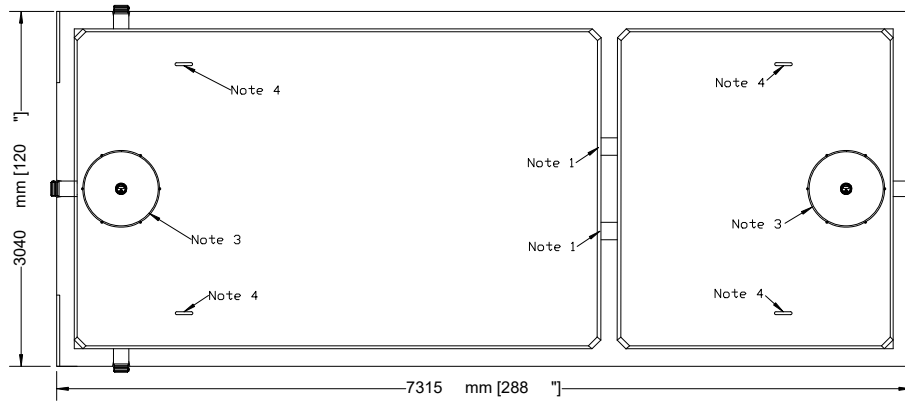


NEWMARKET PRE-CAST CONCRETE PRODUCTS LTD.

Telephone: 905-852-6111 ; Toll Free 1-800-263-1297

Model 36,000 (8000 GAL) Septic - 2 Piece Unit Working Capacity 36,759 Litres (8085 Gal)



Top Section

- This tank design is installed in multiple units
- Each unit is tongue and groove design and is sealed with fibrous mastic sealant
- tanks are cast with 35 MPA strength concrete at 7 days with 5-7% air
- Steel reinforced with 20m rebar, spaced at 300mm in each direction at 50mm cover. CAN/CSA-G30.18.
- Tanks conform to National Standards of Canada CAN/CSA B66-16
- Non-sulphate resistant concrete
- Standard (three) 100mm Inlets and one 100mm outlet fitted with flexible rubber connections
- Chamber divider monolithically cast with structure

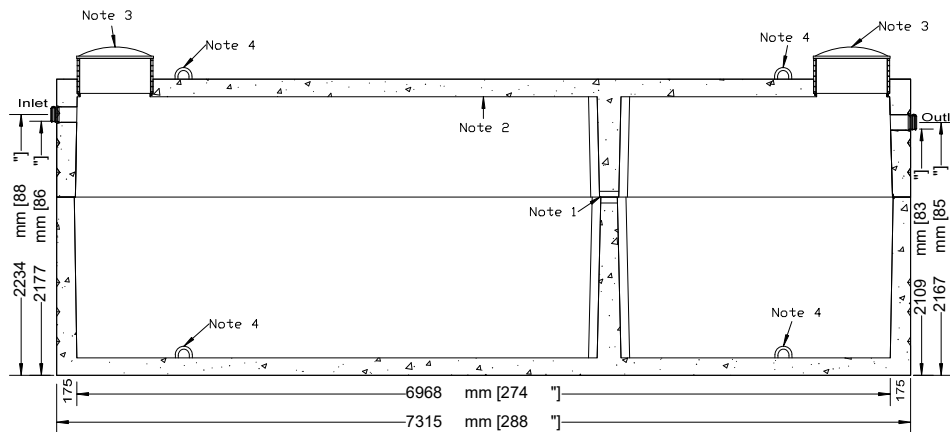
Top Half Weight.....14,515Kg (32,000Lbs)
Bottom Half Weight.....19,960Kg (44,003Lbs)
Total Tank Weight.....34,475Kg (76,003Lbs)

Notes

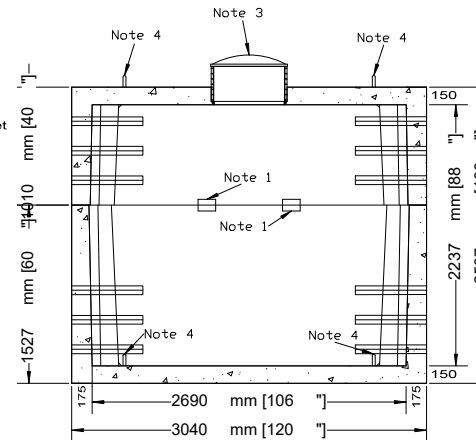
1. Two 100mm x 150mm prtitio flow through holes
2. Outlet contains one 100mm flexible rubber conection - accommodates effluent filter - filter installed by contractor
3. Cast in place 610mm ID plastic riser with plastic lid secured with stainless steel fasteners extending 178mm above top
4. Lifting Hooks - 4 Points each Section

Designed for up to two metre burial over top of tank - vehicle traffic tanks are available upon request. Specialty conformations may be possible

***Watertight seal cannot be guaranteed if Coseal Installation Guidelines are not followed. Please read and follow Insallation Guidelines from <http://conseal.com/Installation/ButylSealingTapes.pdf>**



Side Elevation Section



End Elevation Section

Tank Markings Observed:
Inlet & Outlet is Marked.
Tank is marked on tank lid - Inlet End

NPCP
2019 SEPTIC 36000
B.D. 2 METRE
1200 LIQUID DEPTH
WC 36759
NON-SULPHATE
AGINP



Mastic Sealant

Tongue and Groove Joint