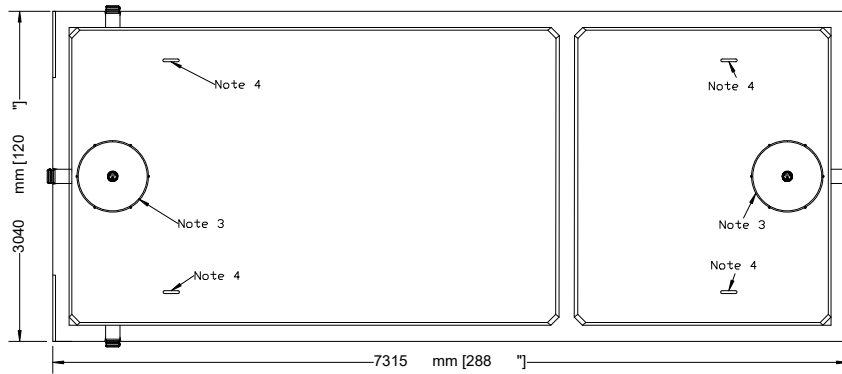


NEWMARKET PRE-CAST CONCRETE PRODUCTS LTD.

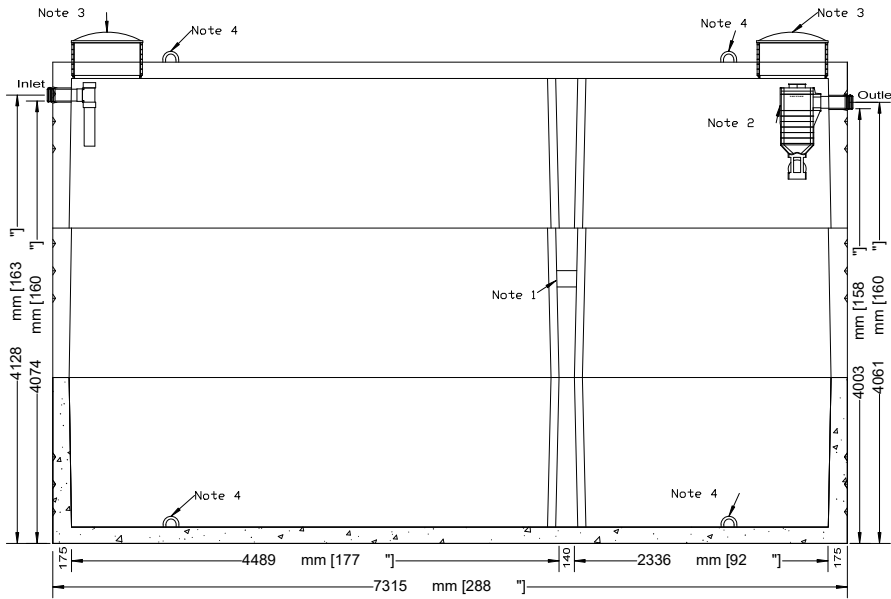
Telephone: 905-852-6111 ; Toll Free 1-800-263-1297

Model 68200 (15000 GAL) Septic Tank - 3 Piece Unit

Working Capacity 67919 Litres (14940 Gal)



Top Section



Side Elevation Section

- This tank design is installed in multiple units
- Each unit is tongue and groove design and is sealed with fibrous mastic sealant
- tanks are cast with 35 MPA strength concrete at 7 days with 5-7% air
- Steel reinforced with 20m rebar, spaced at 300mm in each direction at 50mm cover. CAN/CSA-G30.18.
- Tanks conform to National Standards of Canada CAN/CSA B66-16
- Non-sulphate resistant concrete
- Standard three 100mm Inlets and one 100mm outlet fitted with flexible rubber connections.
- Chamber divider monolithically cast with structure.

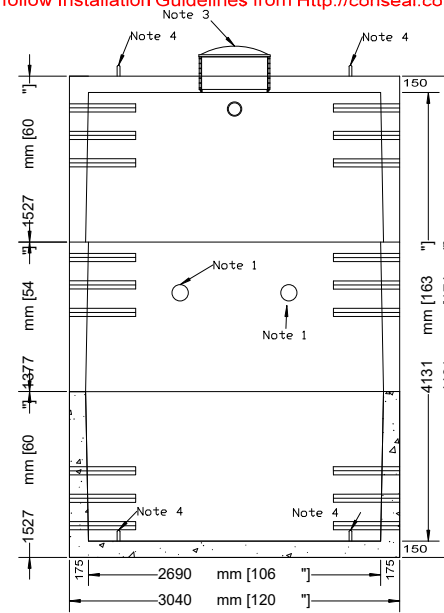
Top Third Weight.....	19959Kg (44,003Lbs)
Middle Third Weight.....	.8754Kg (19,300Lbs)
Bottom Third Weight.....	19959Kg (44,003Lbs)
Total Tank Weight.....	48674Kg (107,306Lbs)

Notes

1. Two 150mm Dia. partition flow through holes
2. Outlet contains one 100mm flexible rubber connection - accommodates outlet filter - filter installed by contractor
3. Cast in place 610mm ID plastic riser with plastic lid secured with stainless steel fasteners extending 100mm above top
4. Lifting Hooks - 4 Points Each Section (Ring to be lifted from Side with Dog Bones)

Designed for up to two metre burial over top of tank - vehicle traffic tanks are available upon request. Specialty conformations may be possible

***Watertight seal cannot be guaranteed if Conseal Installation Guidelines are not followed. Please read and follow Installation Guidelines from [Http://conseal.com/installation/ButylSealingTapes.pdf](http://conseal.com/installation/ButylSealingTapes.pdf)**



End Elevation Section

Tank Markings Observed:
Inlet & Outlet is Marked.
Tank is marked on tank lid - Inlet End

NPCP
2019 SEPTIC 68200
B.D. 2 METRE
1200 LIQUID DEPTH
WC 67919
NON-SULPHATE
AGINP



Mastic Sealant



Mastic Sealant

Tongue and Groove Joint