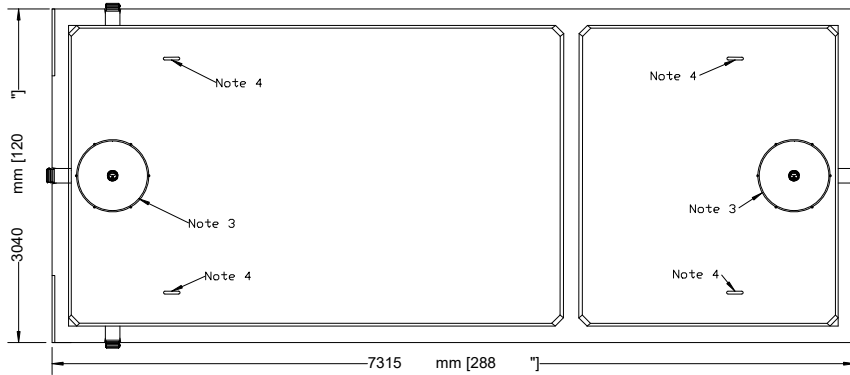


NEWMARKET PRE-CAST CONCRETE PRODUCTS LTD.

Telephone: 905-852-6111 ; Toll Free 1-800-263-1297

Model 45,400 (10,000 GAL) Septic Tank - 2 Piece Unit Working Capacity 46,830 Litres (10,301 Gal)



Top Section

- This tank design is installed in multiple units
- Each unit is tongue and groove design and is sealed with fibrous mastic sealant
- tanks are cast with 45 MPA strength concrete at 7 days with 5-7% air
- Steel reinforced with 20m rebar, spaced at 300mm in each direction at 50mm cover. CAN/CSA-G30.18.
- Tanks conform to National Standards of Canada CAN/CSA B66-16
- Non-sulphate resistant concrete
- Standard three 100mm Inlets and one 100mm outlet fitted with flexible rubber connections.
- Chamber divider monolithically cast with structure.

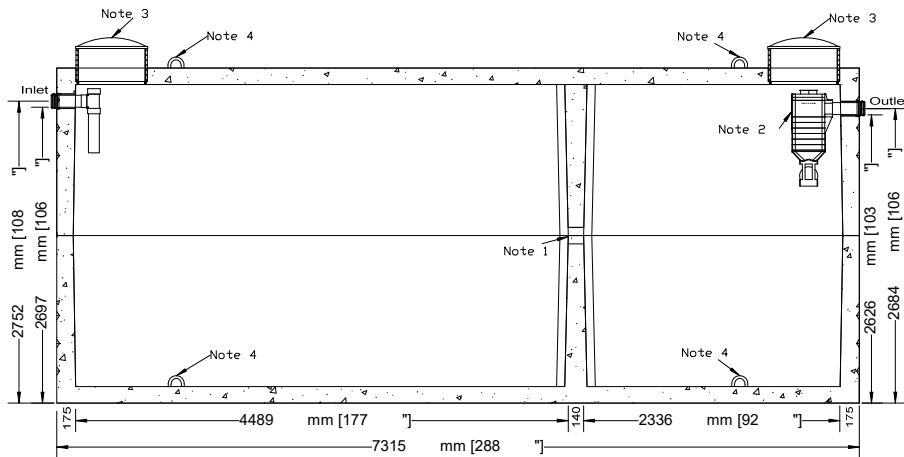
Top Half Weight.....19,959Kg (44,003Lbs)
Bottom Half Weight.....19,959Kg (44,003Lbs)
Total Tank Weight.....39,918Kg (88,006Lbs)

Notes

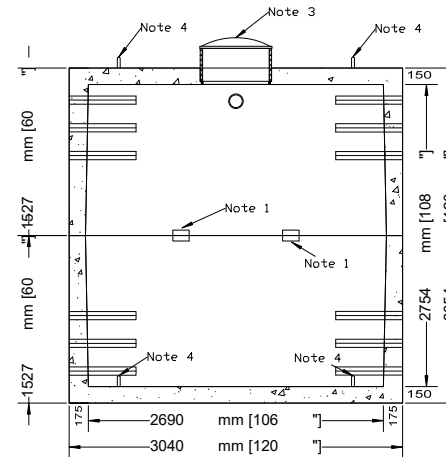
1. Two 100mm x 150mm partition flow through holes
2. Outlet contains one 100mm flexible rubber connection - accommodates outlet filter - filter installed by contractor
3. Cast in place 610mm ID plastic riser with plastic lid secured with stainless steel fasteners extending 175mm above top
4. Lifting Hooks - 4 Points Each Section

Designed for up to two metre burial over top of tank - vehicle traffic tanks are available upon request. Specialty conformations may be possible

*Watertight seal cannot be guaranteed if Conseal Installation Guidelines are not followed. Please read and follow Installation Guidelines from [Http://conseal.com/installation/ButylSealingTapes.pdf](http://conseal.com/installation/ButylSealingTapes.pdf)



Side Elevation Section



End Elevation Section

Tank Markings Observed:
Inlet & Outlet is Marked.
Tank is marked on tank lid - Inlet End

NPCP
2015 SEPTIC-45400
B.D. 2 METRE
1200 LIQUID DEPTH
WC 44059
NON-SULPHATE
AGINP
PML

