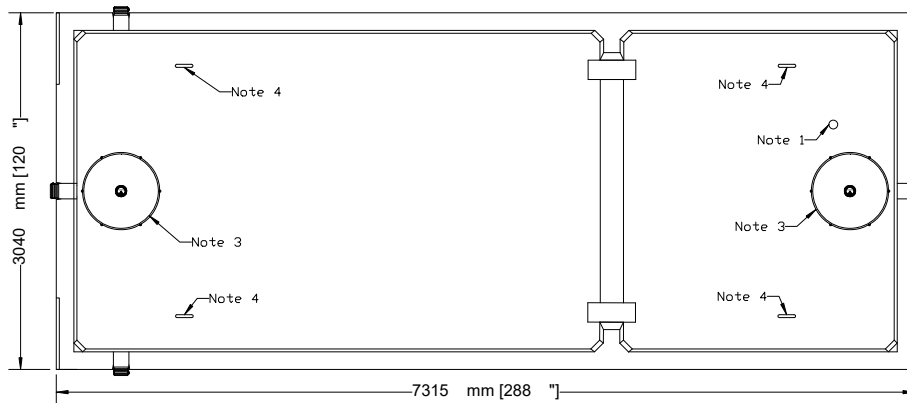


NEWMARKET PRE-CAST CONCRETE PRODUCTS LTD.

Telephone: 905-852-6111 ; Toll Free 1-800-263-1297

Model 36,000 (8000 GAL) Holding Tank - 2 Piece Unit

Working Capacity 37,518 Litres (8253 Gal)



Top Section

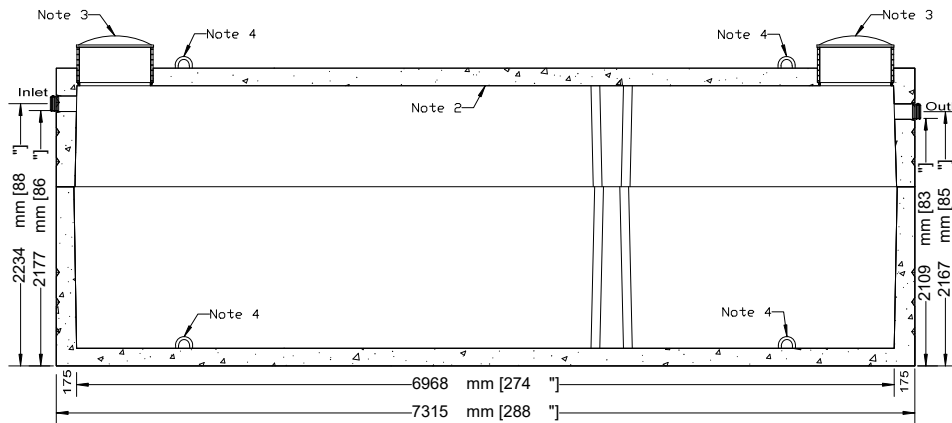
- This tank design is installed in multiple units
- Each unit is tongue and groove design and is sealed with fibrous mastic sealant
- tanks are cast with 35 MPA strength concrete at 7 days with 5-7% air
- Steel reinforced with 20m rebar, spaced at 300mm in each direction at 50mm cover. CAN/CSA-G30.18.
- Tanks conform to National Standards of Canada CAN/CSA B66-16
- Non-sulphate resistant concrete
- Standard (three) 100mm Inlets and one 100mm outlet fitted with flexible rubber connections

Top Half Weight.....14,515Kg (32,000Lbs)
 Bottom Half Weight.....19,960Kg (44,003Lbs)
 Total Tank Weight.....34,475Kg (76,003Lbs)

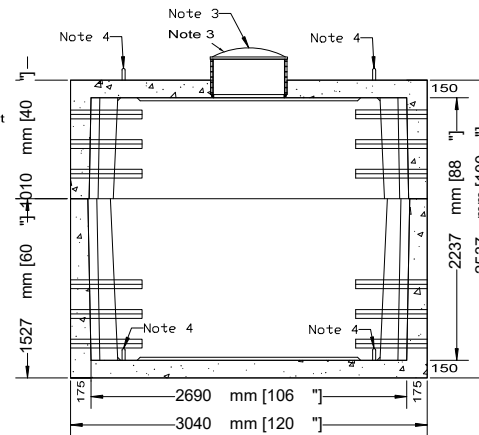
Notes

1. 75mm dia. PVC pipe cast-in to facilitate pump installation or venting
2. Water Storage Capacity to underside of top.....42,585 Litres (9367 Gal)
3. Cast in place 610mm ID plastic riser with plastic lid secured with stainless steel fasteners extending 178mm above top
4. Lifting Hooks - 4 Points each Section

Designed for up to two metre burial over top of tank - vehicle traffic tanks are available upon request. Specialty conformations may be possible



Side Elevation Section



End Elevation Section

Tank Markings Observed:
 Inlet & Outlet is Marked.
 Tank is marked on tank lid - Inlet End

NPCP
 2017 HOLDING 36000
 B.D. 2 METRE
 WC 37518
 NON-SULPHATE
 AGINP

