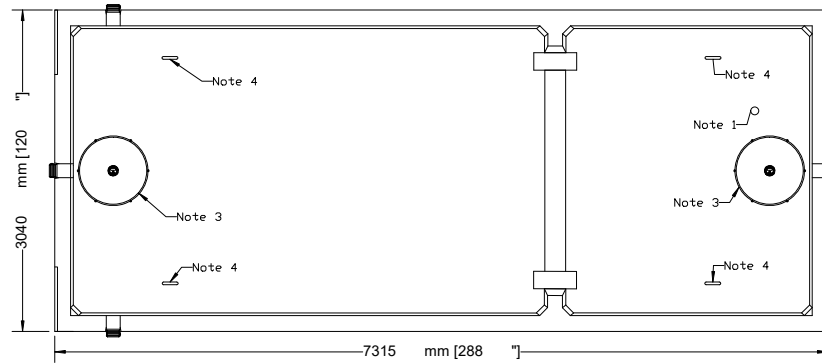


NEWMARKET PRE-CAST CONCRETE PRODUCTS LTD.

Telephone: 905-852-6111 ; Toll Free 1-800-263-1297

Model 68200 (15000 GAL) Holding Tank - 3 Piece Unit

Working Capacity 68782 Litres (15130 Gal)



Top Section

- This tank design is installed in multiple units
- Each unit is tongue and groove design and is sealed with fibrous mastic sealant
- tanks are cast with 35 MPA strength concrete at 7 days with 5-7% air
- Steel reinforced with 20m rebar, spaced at 300mm in each direction at 50mm cover. CAN/CSA-G30.18.
- Tanks conform to National Standards of Canada CAN/CSA B66-16
- Non-sulphate resistant concrete
- Standard three 100mm Inlets and one 100mm outlet fitted with flexible rubber connections

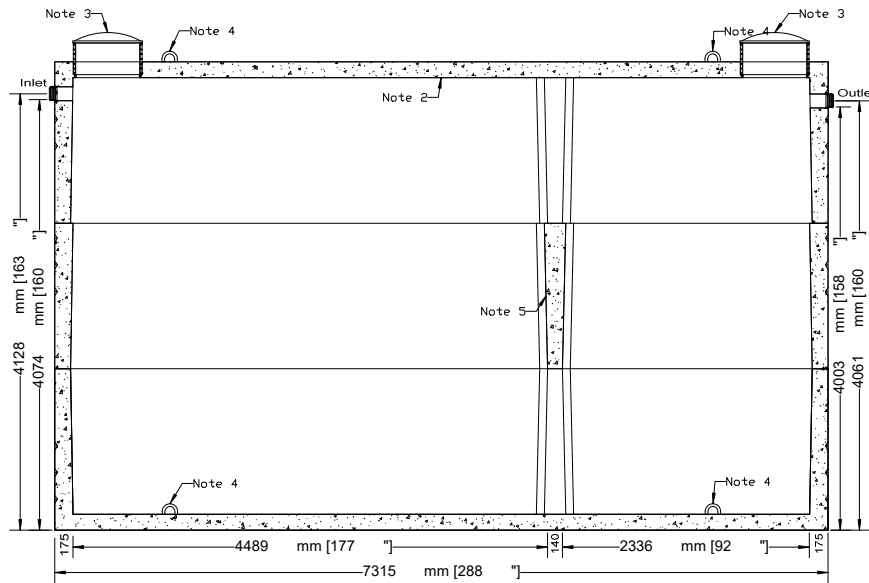
Top Third Weight.....	18220 Kg (40,169 Lbs)
Middle Third Weight.....	8754 Kg (19,300 Lbs)
Bottom Third Weight.....	18220 Kg (40,169 Lbs)
Total Tank Weight.....	45195 Kg (99,638 Lbs)

Notes

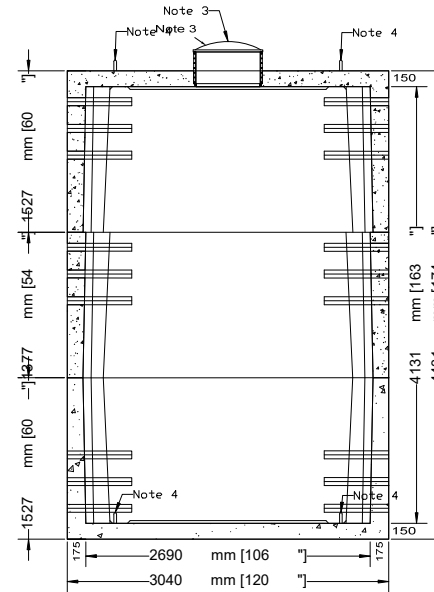
1. 75mm dia. PVC pipe cast-in to facilitate pump installation or venting
2. Water Storage Capacity to underside of top.....**77,559 Litres (17,060 Gal)**
3. Cast in place 610mm ID plastic riser with plastic lid secured with stainless steel fasteners extending 178mm above top
4. Lifting Hooks - 4 Points Each Section (Ring to be lifted from sides with Dog Bones)
5. Monolithically cast in divider for structure.

Designed for up to two metre burial over top of tank - vehicle traffic tanks are available upon request. Specialty conformations may be possible

• **Watertight seal cannot be guaranteed if ConSeal Installation Guidelines are not followed, Please read and Follow Installation Guidelines from <http://conseal.com/installation/ButylSealingTapes.pdf>**



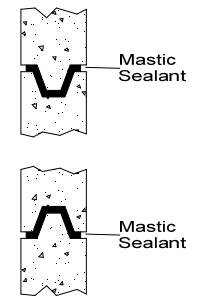
Side Elevation Section



End Elevation Section

Tank Markings Observed:
Inlet & Outlet is Marked.
Tank is marked on tank lid - Inlet End

NPCP
2019 HOLDING 68200
B.D. 2 METRE
WC 68782
NON-SULPHATE
AGINP



Tongue and Groove Joint