

NEWMARKET PRE-CAST CONCRETE PRODUCTS LTD.

Telephone: 905-852-6111 ; Toll Free 1-800-263-1297

Model 22500 Low (5000 GAL) Holding Tank - 1 Piece Unit Working Capacity 24,298 Litres (5345 Gal)

- This tank design is installed in multiple units
- Each unit is tongue and groove design and is sealed with fibrous mastic sealant
- tanks are cast with 35 MPA strength concrete at 7 days with 5-7% air
- Steel reinforced with 20m rebar, spaced at 300mm in each direction at 50mm cover. CAN/CSA-G30.18.
- Tanks conform to National Standards of Canada CAN/CSA B66-16
- Non-sulphate resistant concrete
- Standard (three) 100mm Inlets and one 100mm outlet fitted with flexible rubber connections

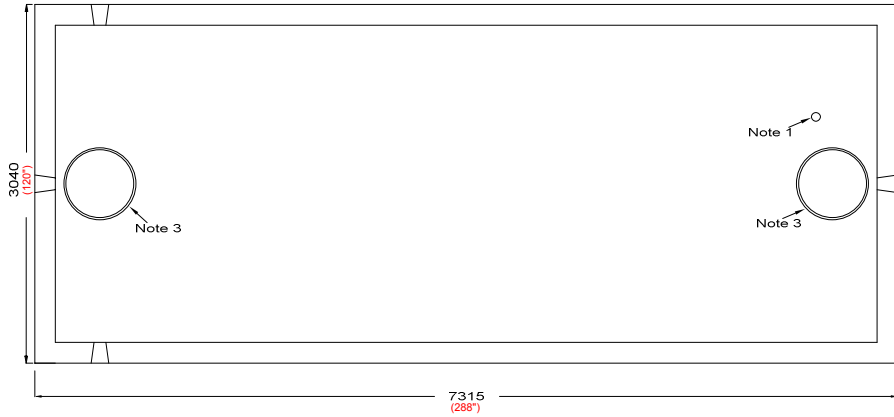
Top Half Weight..... 7,168Kg (15,804Lbs)
Bottom Half Weight.....19,960Kg (44,003Lbs)
Total Tank Weight.....27,128Kg (59,807Lbs)

Notes

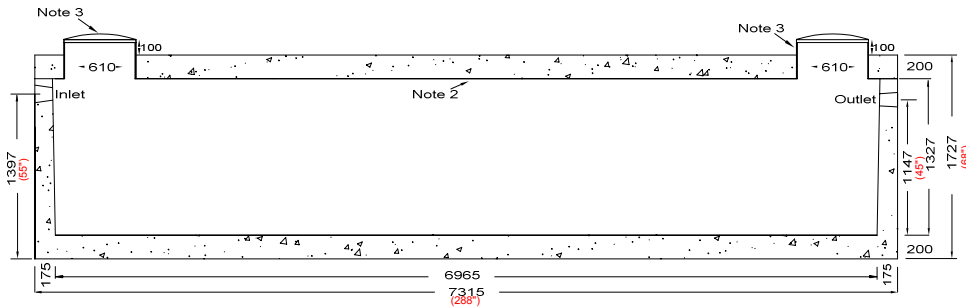
1. 75mm dia. PVC pipe cast-in to facilitate pump installation or venting
2. Water Storage Capacity to underside of top.....**27,860 Litres (6128 Gal)**
3. Cast in place 610mm ID plastic riser with plastic lid secured with stainless steel fasteners extending 100mm above top

Designed for up to two metre burial over top of tank - vehicle traffic tanks are available upon request. Specialty conformations may be possible

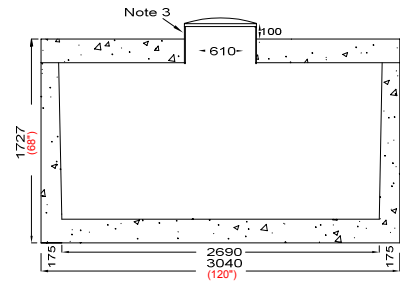
To ensure a water-tight seal, seams must be cemented both inside and out



Top Section



Side Elevation Section



End Elevation Section

Tank Markings Observed:
Inlet & Outlet is Marked.
Tank is marked on tank lid - Inlet End

NPCP
2017 HOLDING 36000
B.D. 2 METRE
WC 24298
NON-SULPHATE
AGINP

