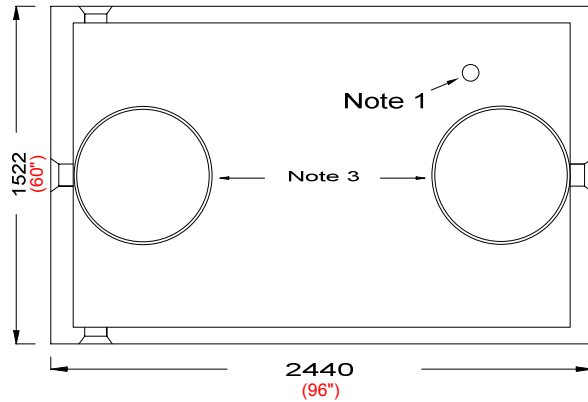


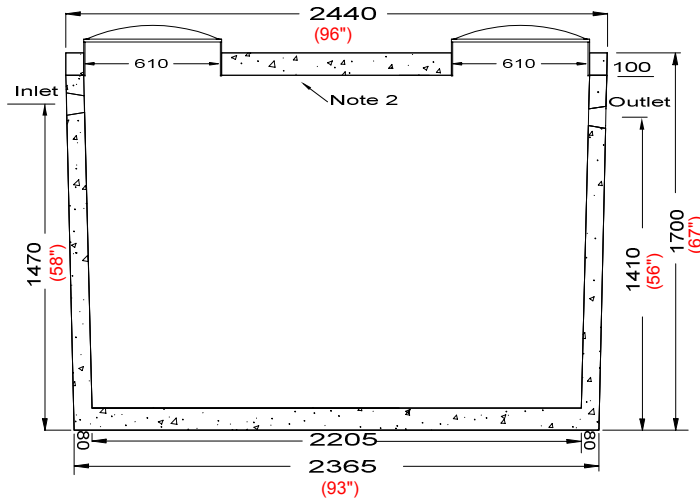
**NEWMARKET PRE-CAST CONCRETE PRODUCTS LTD.**

Telephone: 905-852-6111 ; Toll Free 1-800-263-1297

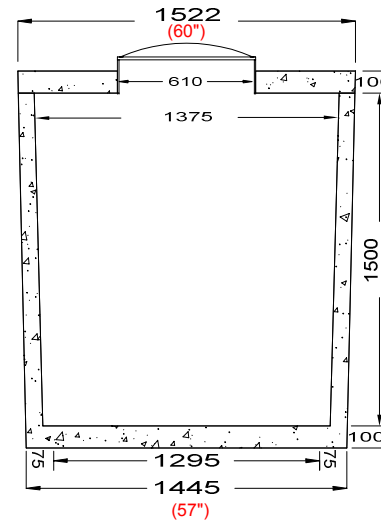
**Model 3600 (800 GAL) Holding Tank - 1 Piece Unit**  
**Working Capacity 3704 Litres (815 Gal)**



Top Section



Side Elevation Section



End Elevation Section

- This tank design is a one piece unit. Top is sealed with a fibrous mastic sealant
- tanks are cast with 35 MPA strength concrete at 7 days with 5-7% air
- 3.0 Kg. structural fibre added to concrete. ASTM C 1116
- Lid has 10m Pre-manufactured welded wire
- Rebar Cover 25mm
- Tanks conform to National Standards of Canada CAN/CSA B66-16
- Non-sulphate resistant concrete
- Standard (3) 100mm Inlets and 1 outlet fitted with flexible rubber connections

Bare Base Weight.....3260 Kg (7187 Lbs)  
Lid Weight.....910 Kg (2006 Lbs)  
Total Tank Weight.....4170 Kg (9193 Lbs)

Notes

1. 75mm dia. PVC pipe cast-in to facilitate pump installation or venting
2. Water Storage Capacity to underside of top..... **4,200 Ltrs. (924 gal.)**
3. Cast in place 610mm ID plastic riser with plastic lid secured with stainless steel fasteners extending 50mm above concrete

Designed for up to one metre burial over top of tank - Deep burial and vehicle traffic tanks are available upon request. Specialty conformations may be possible

Tank Markings Observed:  
Inlet & Outlet is Marked.  
Tank is marked on tank lid - Inlet End

**NPCP**  
2017 HOLDING 3600  
B.D. 1 METRE  
WC 3704  
NON-SULPHATE  
AGINP