

NEWMARKET PRE-CAST CONCRETE PRODUCTS LTD.

Telephone: 905-852-6111 ; Toll Free 1-800-263-1297

Model 50,000 (10,000 GAL) Holding Tank - 2 Piece Unit Working Capacity 46,865 Litres (10,309 Gal)

- This tank design is installed in multiple units
- Each unit is tongue and groove design and is sealed with fibrous mastic sealant
- tanks are cast with 35 MPA strength concrete at 7 days with 5-7% air
- Steel reinforced with 20m rebar, spaced at 300mm in each direction at 50mm cover. CAN/CSA-G30.18.
- Tanks conform to National Standards of Canada CAN/CSA B66-16
- Non-sulphate resistant concrete
- Standard three 100mm Inlets and one 100mm Outlet fitted with flexible rubber connections

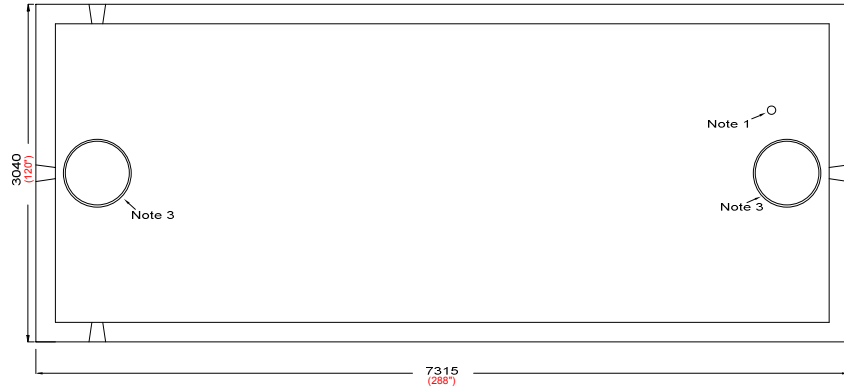
Top Half Weight.....18,220 Kg (40,169 Lbs)
Bottom Half Weight.....18,220 Kg (40,169 Lbs)
Total Tank Weight.....36,440 Kg (80,338 Lbs)

Notes

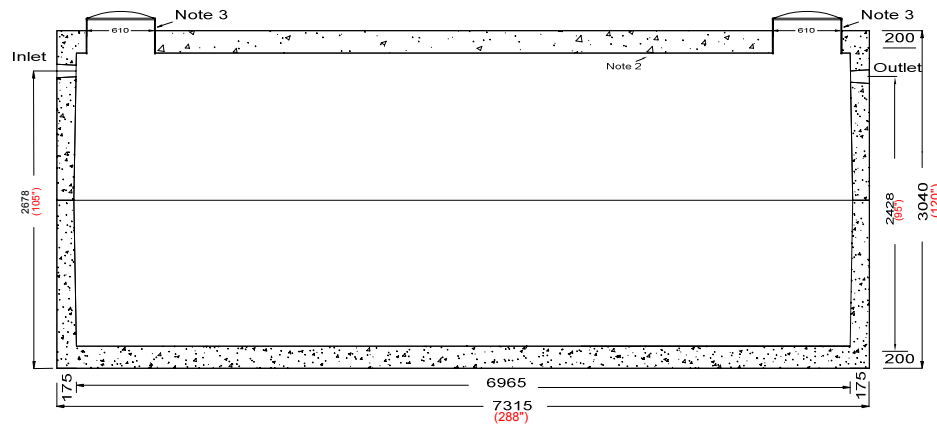
1. 75mm dia. PVC pipe cast-in to facilitate pump installation or venting
2. Water Storage Capacity to underside of top.....**50,687 Litres (11,150 Gal)**
3. Cast in place 610mm ID plastic riser with plastic lid secured with stainless steel fasteners extending 100mm above top

Designed for up to two metre burial over top of tank - vehicle traffic tanks are available upon request. Specialty conformations may be possible

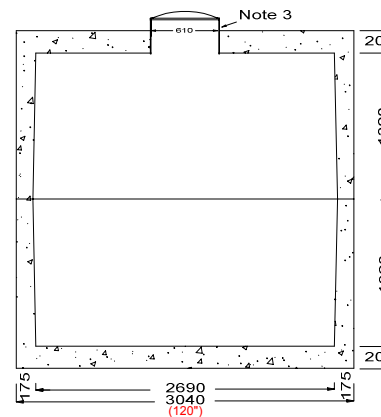
To ensure a water-tight seal, seams must be cemented both inside and out



Top Section



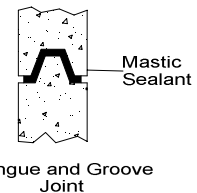
Side Elevation Section



End Elevation Section

Tank Markings Observed:
Inlet & Outlet is Marked.
Tank is marked on tank lid - Inlet End

NPCP
2017 HOLDING 50000
B.D. 2 METRE
WC 46865
NON-SULPHATE
AGINP



Tongue and Groove Joint