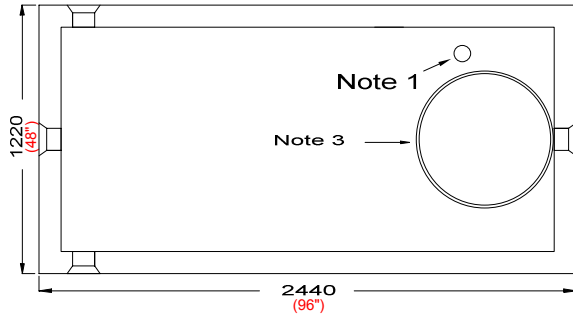


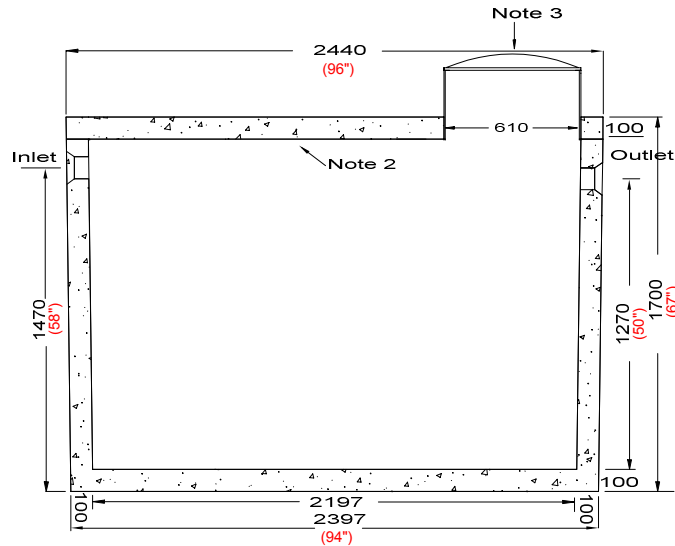
# NEWMARKET PRE-CAST CONCRETE PRODUCTS LTD.

Telephone: 905-852-6111 ; Toll Free 1-800-263-1297

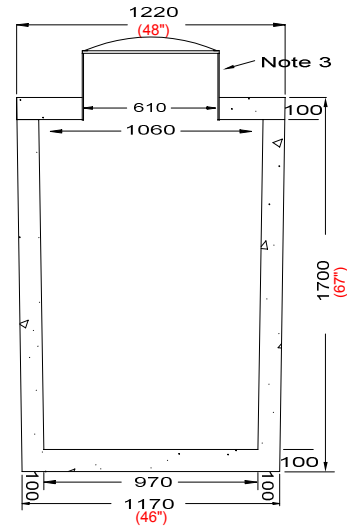
## Model 2700 (600 GAL) Holding Tank - 1 Piece Unit Working Capacity 2816 Litres (619 Gal)



Top Section



Side Elevation Section



End Elevation Section

- This tank design is a one piece unit. Top is sealed with a fibrous mastic sealant
- tanks are cast with 35 MPA strength concrete at 7 days with 5-7% air
- 3.0 Kg. structural fibre added to concrete. ASTM C 1116
- Lid has 10m Pre-manufactured welded wire
- Rebar Cover 25mm
- Tanks conform to National Standards of Canada CAN/CSA B66-16
- Non-sulphate resistant concrete
- Standard (3) 100mm Inlets and 1 outlet fitted with flexible rubber connections

Bare Base Weight.....2800 Kg (6173 Lbs)  
Lid Weight..... 710 Kg (1565 Lbs)  
Total Tank Weight.....3510 Kg (7738 Lbs)

Notes

1. 75mm dia. PVC pipe cast-in to facilitate pump installation or venting
2. Water Storage Capacity to underside of top..... **3,150 Ltrs. (693 gal.)**
3. Cast in place 610mm ID plastic riser with plastic lid secured with stainless steel fasteners extending 200mm above concrete

Designed for up to one metre burial over top of tank - Deep burial and vehicle traffic tanks are available upon request. Specialty conformations may be possible

Tank Markings Observed:  
Inlet & Outlet is Marked.  
Tank is marked on tank lid - Inlet End

NPCP  
2017 HOLDING 2700  
B.D. 1 METRE  
WC 2816  
NON-SULPHATE  
AGINP