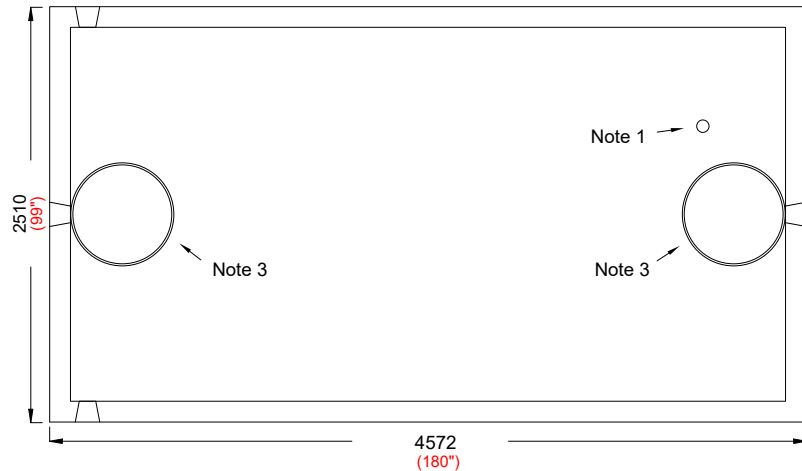


# NEWMARKET PRE-CAST CONCRETE PRODUCTS LTD.

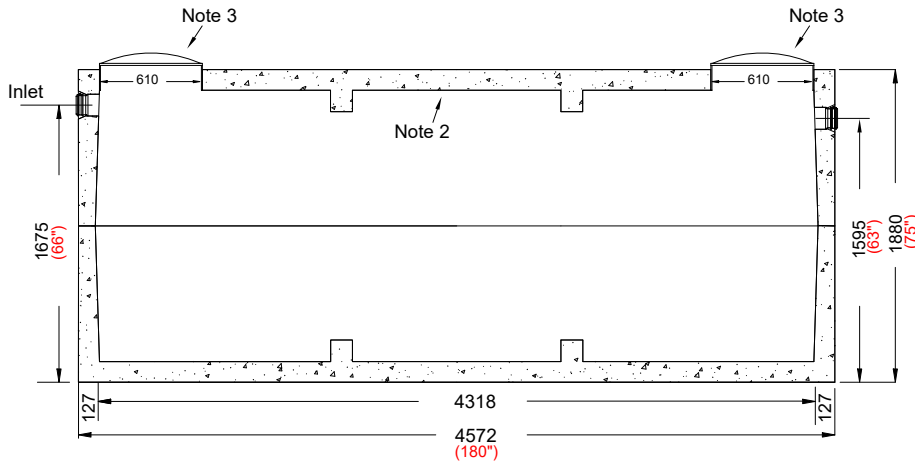
Telephone: 905-852-6111 ; Toll Free 1-800-263-1297

## Model 13500 (3000 GAL) Holding Tank - 2 Piece Unit

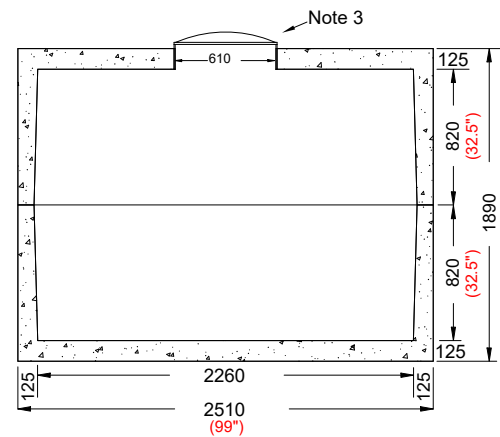
Working Capacity 14,122 Litres (3106 Gal)



Top Section



Side Elevation Section



End Elevation Section

- This tank design is installed in multiple units
- Each unit is tongue and groove design and is sealed with fibrous mastic sealant
- tanks are cast with 35 MPA strength concrete at 7 days with 5-7% air
- Each piece is steel reinforced with 6-10m in the long direction, 12-10M in the short direction in the base/lid and in the walls 3-10M horizontal with verticals matching the base/lid
- Tanks conform to National Standards of Canada CAN/CSA B66-16
- Non-sulphate resistant concrete
- Standard (3) 100mm Inlets and 1 outlet fitted with flexible rubber connections

Top Half Weight.....6935 Kg (15,289 Lbs)  
 Bottom Half Weight.....6500 Kg (14,330 Lbs)  
 Total Tank Weight.....13435 Kg (29,619 Lbs)

Notes

1. 75mm dia. PVC pipe cast-in to facilitate pump installation or venting
2. Water Storage Capacity to underside of top..... **15,744 Ltrs. (3463 gal.)**
3. Cast in place 610mm ID plastic riser with plastic lid secured with stainless steel fasteners, extending 50mm above concrete

Designed for up to one metre burial over top of tank - Deep Burial and vehicle traffic tanks are available upon request. Specialty conformations may be possible

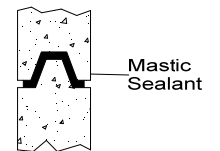
To ensure water-tight seal, it is standard practice that the joint be cemented both inside and out

Tank Markings Observed:

Inlet & Outlet is Marked.

Tank is marked on tank lid - Inlet End

NPCP  
 2017 HOLDING 13500  
 B.D. 1 METRE  
 WC 14122  
 NON-SULPHATE  
 AGINP



Tongue and Groove Joint