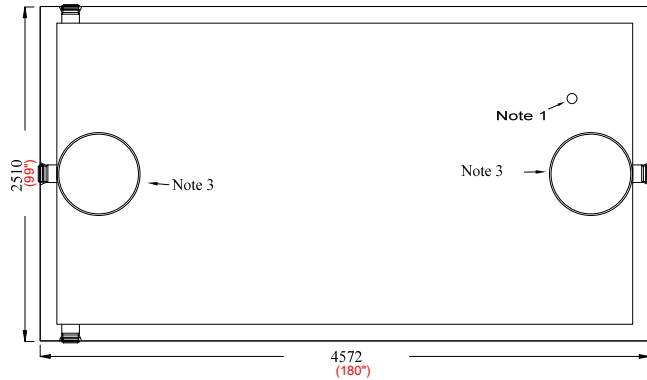


NEWMARKET PRE-CAST CONCRETE PRODUCTS LTD.

Telephone: 905-852-6111 ; Toll Free 1-800-263-1297

Model 22,500 (5000 GAL) Holding Tank - 2 Piece Unit Working Capacity 23,050 Litres (5070 Gal)



Top Section

- This tank design is installed in multiple units
- Each unit is tongue and groove design and is sealed with fibrous mastic sealant
- tanks are cast with 35 MPA strength concrete at 7 days with 5-7% air
- Steel reinforced with 10m rebar, spaced at 400mm in each direction at 25mm cover. CAN/CSA-G30.18.
- Tanks conform to National Standards of Canada CAN/CSA B66-18
- Non-sulphate resistant concrete
- Standard (3) 100mm Inlets and 1 outlet fitted with flexible rubber connections

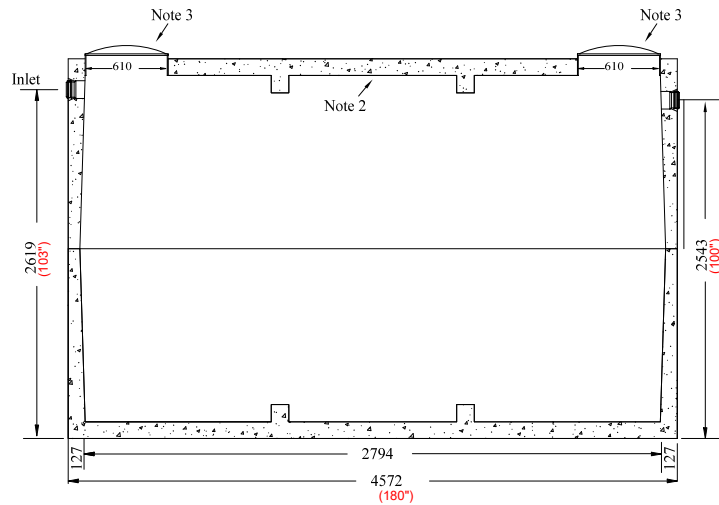
Top Half Weight..... 8420 Kg (18,562 Lbs)
 Bottom Half Weight..... 8270 Kg (18,232 Lbs)
 Total Tank Weight..... 16,690 Kg (36,795 Lbs)

Notes

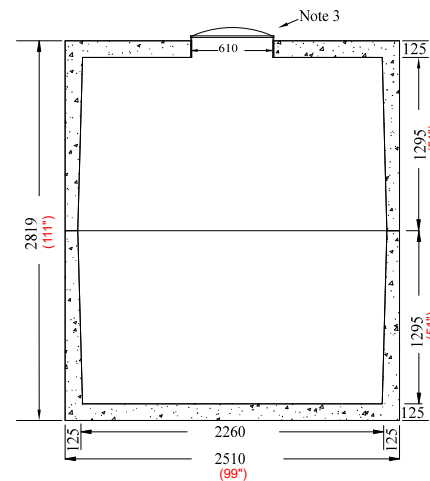
1. 75mm dia. PVC pipe cast-in to facilitate pump installation or venting
2. Water Storage Capacity to underside of top..... **24,864 Ltrs. (5470 gal.)**
3. Cast in place 610mm ID plastic riser with plastic lid secured with stainless steel fasteners extending 50mm above concrete

Designed for up to one metre burial over top of tank - Deep burial and vehicle traffic tanks are available upon request. Specialty conformations may be possible

To ensure water-tight seal, it is standard practice that the joint be cemented both inside and out



Side Elevation Section



End Elevation Section

Tank Markings Observed:
 Inlet & Outlet is Marked.
 Tank is marked on tank lid - Inlet End

NPCP
 2018 HOLDING 22500
 B.D. 1 METRE
 WC 23050
 NON-SULPHATE
 AGINP

