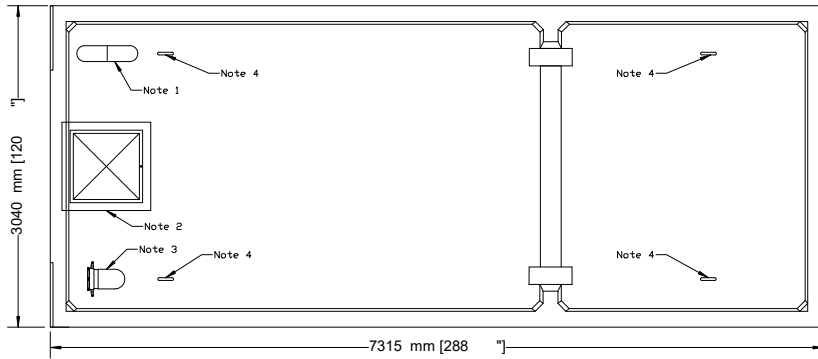


NEWMARKET PRE-CAST CONCRETE PRODUCTS LTD.

Telephone: 905-852-6111 ; Toll Free 1-800-263-1297

Model 50,000 (10000 GAL) Fire Suppression Tank - 2 Piece Unit Water Storage Capacity 50,687 Litres (11,150 Gal)



Top Section

- This tank design is installed in multiple units
- Each unit is tongue and groove design and is sealed with fibrous mastic sealant
- tanks are cast with 35 MPA strength concrete at 7 days with 5-7% air
- Steel reinforced with 20m rebar, spaced at 300mm in each direction at 50mm cover. CAN/CSA-G30.18.
- Tanks conform to National Standards of Canada CAN/CSA B66-16
- Non-sulphate resistant concrete

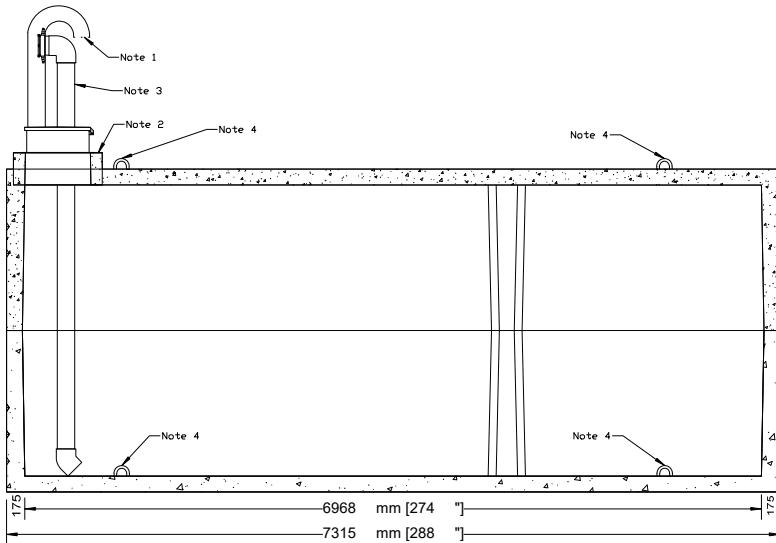
Top Third Weight.....18,220 Kg (40,169 Lbs)
Bottom Third Weight.....18,220 Kg (40,169 Lbs)
Total Tank Weight.....36,440 Kg (80,338 Lbs)

Notes

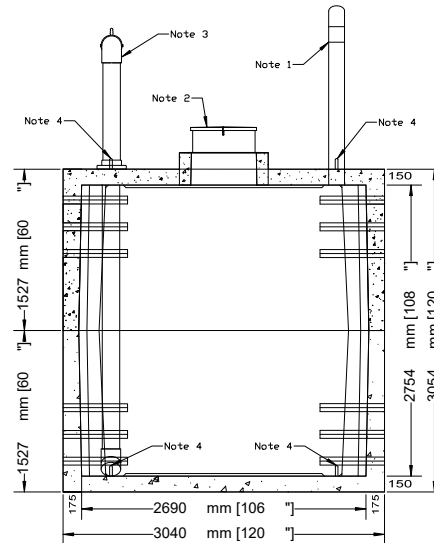
1. 150mm dia. PVC coupler cast-in with Gooseneck Vent Pipe
2. Cast in place 610mm x 610mm Concrete riser with NPCP Aluminum Lockable Hatch
3. Kochek DHF611 Dry-Hydrant with DR-26 Draw Pipe, bolted to the tank with Vanstone Socket Flange
4. Lifting Hooks - 4 Points each Section

Designed for up to two metre burial over top of tank - vehicle traffic tanks are available upon request. Specialty conformations may be possible

• Watertight seal cannot be guaranteed if ConSeal Installation Guidelines are not followed, Please read and Follow Installation Guidelines from <http://conseal.com/installation/ButylSealingTapes.pdf>



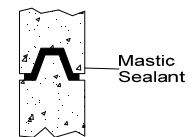
Side Elevation Section



End Elevation Section

Tank Markings Observed:
Inlet & Outlet is Marked.
Tank is marked on tank lid - Inlet End

NPCP
HOLDING 50000
B.D. 2 METRE
WC 46,865
NON-SULPHATE
AGINP



Tongue and Groove Joint