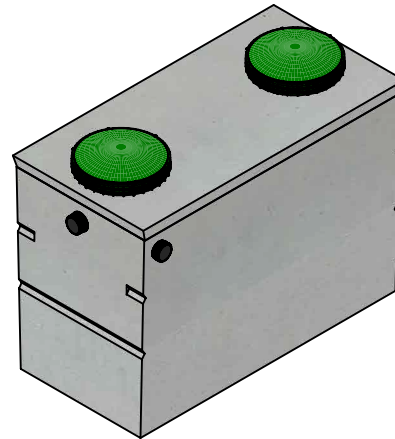
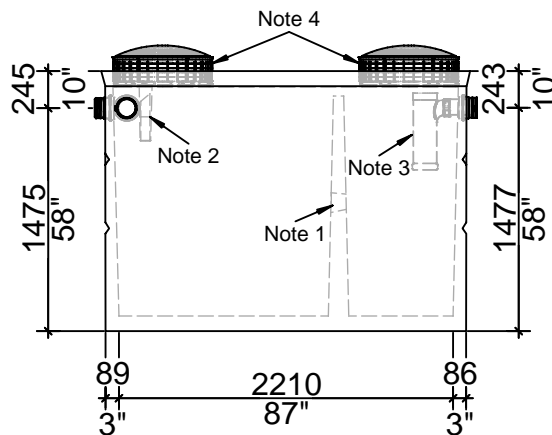


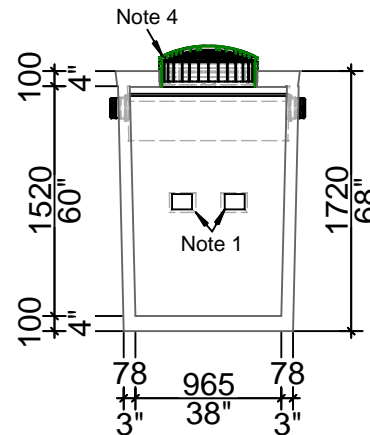
Top View



Isometric View



Side View



End View

WORKING CAPACITY: 2756L (606 IG)

Bare Base Weight.....2870 Kg (6,327 Lbs)

Lid Weight.....710 Kg (1,565 Lbs)

Total Tank Weight.....3580 Kg (7,892 Lbs)

Notes

1. Two 100mm x 150mm partition flow through
2. Concrete inlet baffle is pre-fitted to accommodate three 100mm flexible rubber connections
3. Outlet contains one 100mm flexible rubber connection fitted with Tuf-tite EF-6 Effluent Filter
4. Cast in place 610mm ID Tuf-tite riser with dome lid secured with stainless steel fasteners

Tank Markings Observed:

Inlet & Outlet are Marked

Tank is Marked on Tank Lid - Inlet End

NPCP
HOLDING 2700 L
B.D. 1 METRE
WC 2756
NON SULPHATE
AGINP



20 Victoria St
Uxbridge, ON L9P 1N4
Tel: 905-852-6111
Toll Free: 1-800-263-1297
Fax: 905-852-4340
Info@Newmarketprecast.com
Newmarketprecast.com

Model 2700 Septic 600 Imperial Gallon

Designed for up to **One Metre** burial over top of tank - Deep burial and vehicle traffic tanks are available upon request. Specialty conformations may be possible

- This tank design is installed in one piece.
- Top is sealed to base with a fibrous mastic sealant
- Tanks are cast with 45 MPA strength concrete at 7 days with 5-7% air
- 3.0 Kg. structural fibre added to concrete. ASTM C 1116
- Lid has 10m Pre-manufactured welded wire
- Rebar Cover 25mm, CAN/CSA-G30.18.
- Tanks conform to National Standard of Canada CAN/CSA B66-16
- Non-sulphate resistant concrete
- Standard three 100mm Inlets and one 100mm Outlet