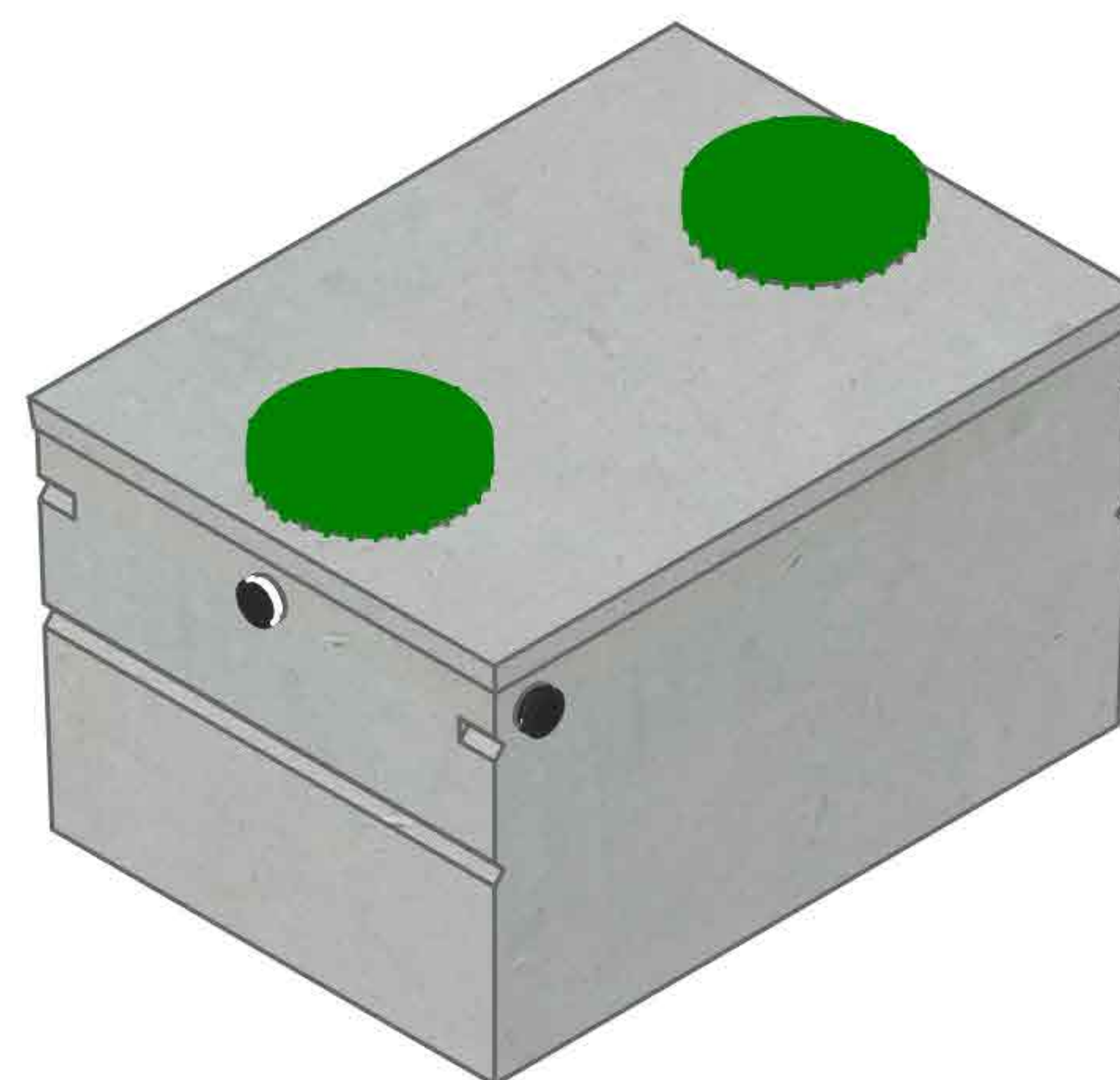


Top View



Isometric View

WORKING CAPACITY: 3667L (806 IG)

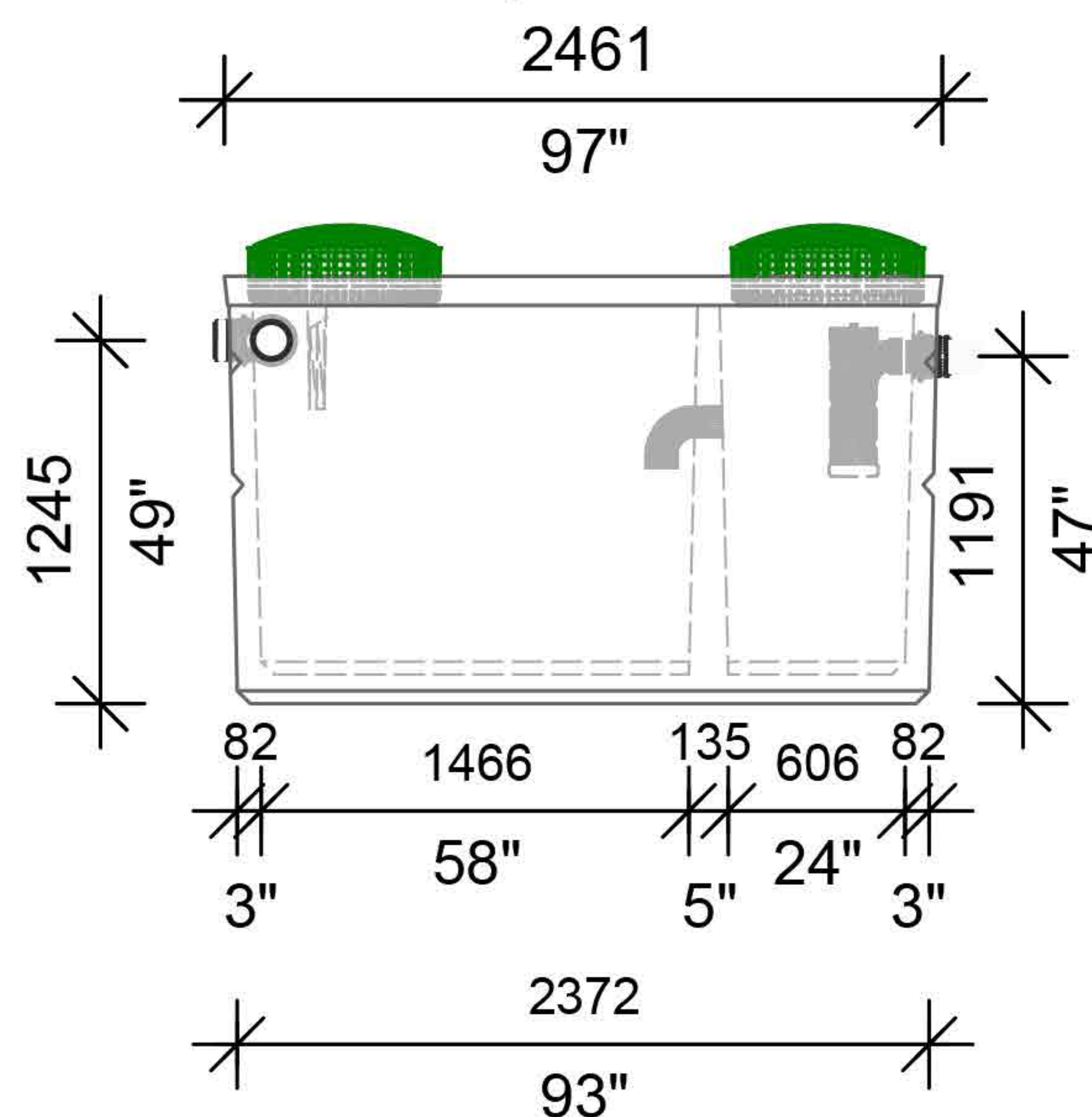
Bare Base Weight.....3370 Kg (7,429 Lbs)

Lid Weight.....1040 Kg (2,293 Lbs)

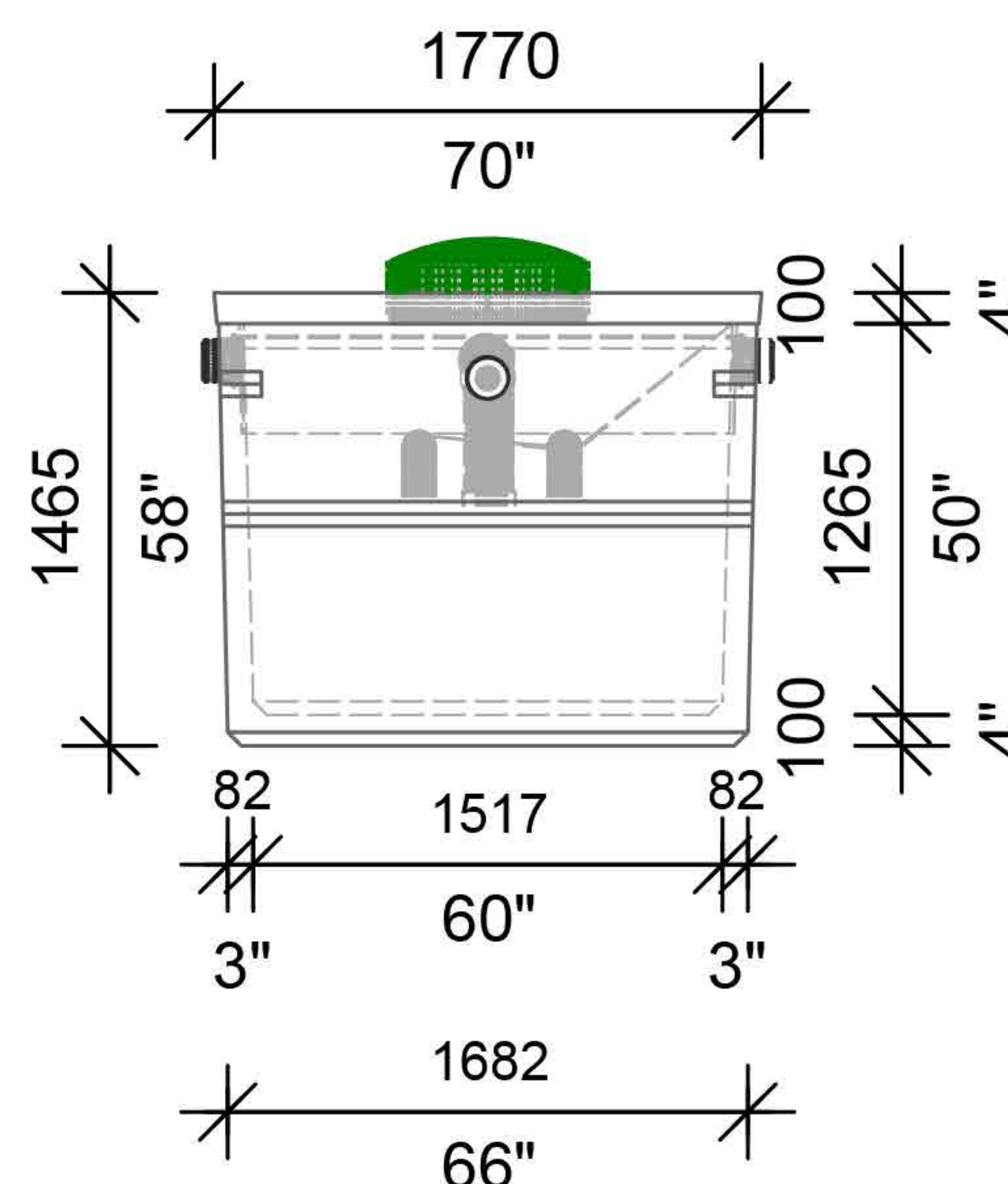
Total Tank Weight.....4410 Kg (9,722 Lbs)

Notes

1. Two 100mm PVC 90 Degree Elbow through partition
2. Concrete inlet baffle is pre-fitted to accommodate three 100mm flexible rubber connections
3. Outlet contains one 100mm flexible rubber connection fitted with Tuf-tite EF-6 Effluent Filter
4. Cast in place 610mm ID Tuf-tite riser with dome lid secured with stainless steel fasteners extending 70mm above top



Side View



End View

Tank Markings Observed:

Inlet & Outlet are Marked

Tank is Marked on Tank Lid - Inlet End

NPCP
SEPTIC LOW 800 L
B.D. 1 METRE
1200 LIQUID DEPTH
WC 5879
NON SULPHATE
AGINP



20 Victoria St
Uxbridge, ON L9P 1N4
Tel: 905-852-6111
Toll Free: 1-800-263-1297
Fax: 905-852-4340
Info@Newmarketprecast.com
Newmarketprecast.com

Model Low 800 Septic 800 Imperial Gallon

Designed for up to **One Metre** burial over top of tank - Deep burial and vehicle traffic tanks are available upon request. Specialty conformations may be possible

- This tank design is a one piece unit. Top is sealed with a fibrous mastic sealant
- Tanks are cast with 45 MPA strength concrete at 7 days with 5-7% air
- 3.0 Kg. structural fibre added to concrete. ASTM C 1116
- Lid has 10m Pre-manufactured welded wire
- Rebar Cover 25mm
- Tanks conform to National Standard of Canada CAN/CSA B66-16
- Non-sulphate resistant concrete
- Chamber divider monolithically cast in with structure
- Standard three 100mm Inlets and one 100mm Outlet with filter that meets building code