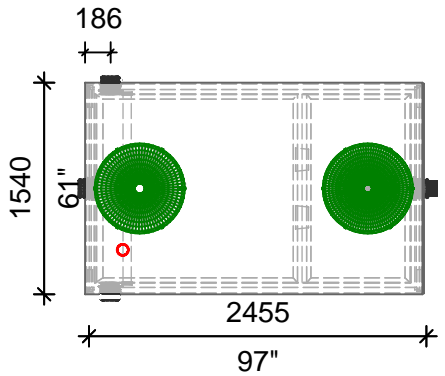


WORKING CAPACITY: 3673L (808 IG)

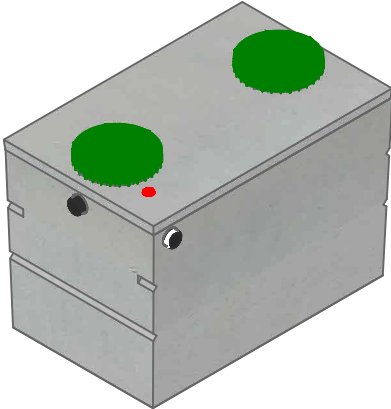
Bare Base Weight.....3,355 Kg (7,396 Lbs)  
 Lid Weight..... 910 Kg (2,006 Lbs)  
 Total Tank Weight.....4,265 Kg (9,402 Lbs)

Notes

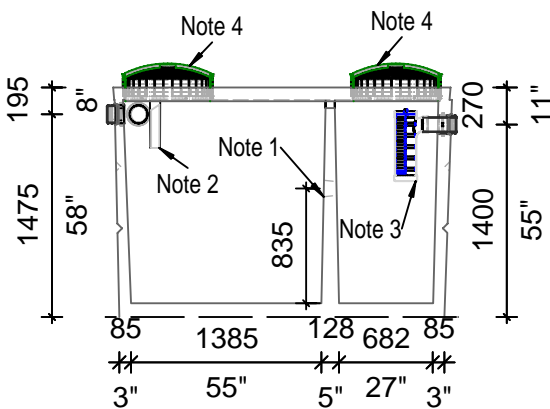
1. Two 100mm x 150mm partition flow through
2. Concrete inlet baffle is pre-fitted to accommodate three 100mm flexible rubber connections
3. Outlet contains one 100mm flexible rubber connection fitted with Tuf-tite EF-6 Effluent Filter
4. Cast in place 610mm ID Tuf-tite riser with dome lid secured with stainless steel fasteners extending 70mm above top



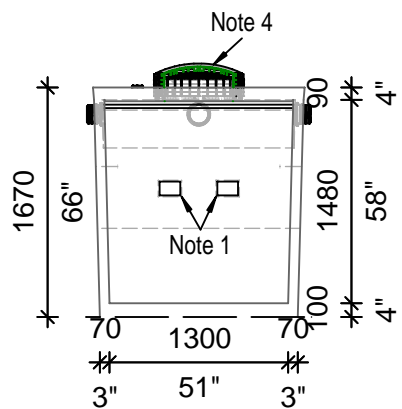
Top View



Isometric View



Side View



End View

Tank Markings Observed:  
 Inlet & Outlet are Marked  
 Tank is Marked on Tank Lid - Inlet End

**NPCP**  
 SEPTIC 3600 L  
 B.D. 1 METRE  
 1200 LIQUID DEPTH  
 WC 3673  
 NON SULPHATE  
 AGINP  
**PML**



20 Victoria St  
 Uxbridge, ON L9P 1N4  
 Tel: 905-852-6111  
 Toll Free: 1-800-263-1297  
 Fax: 905-852-4340  
 Info@Newmarketprecast.com  
 Newmarketprecast.com

# Model 3600 Septic 800 Imperial Gallon

Designed for up to **One Metre** burial over top of tank - Deep burial and vehicle traffic tanks are available upon request. Specialty conformations may be possible

- This tank design is a one piece unit. Top is sealed with a fibrous mastic sealant
- Tanks are cast with 45 MPA strength concrete at 7 days with 5-7% air
- 3.0 Kg. structural fibre added to concrete. ASTM C 1116
- Lid has 10m Pre-manufactured welded wire
- Rebar Cover 25mm
- Tanks conform to National Standard of Canada CAN/CSA B66-16
- Non-sulphate resistant concrete
- Chamber divider monolithically cast in with structure
- Standard three 100mm Inlets and one 100mm Outlet with filter that meets building code