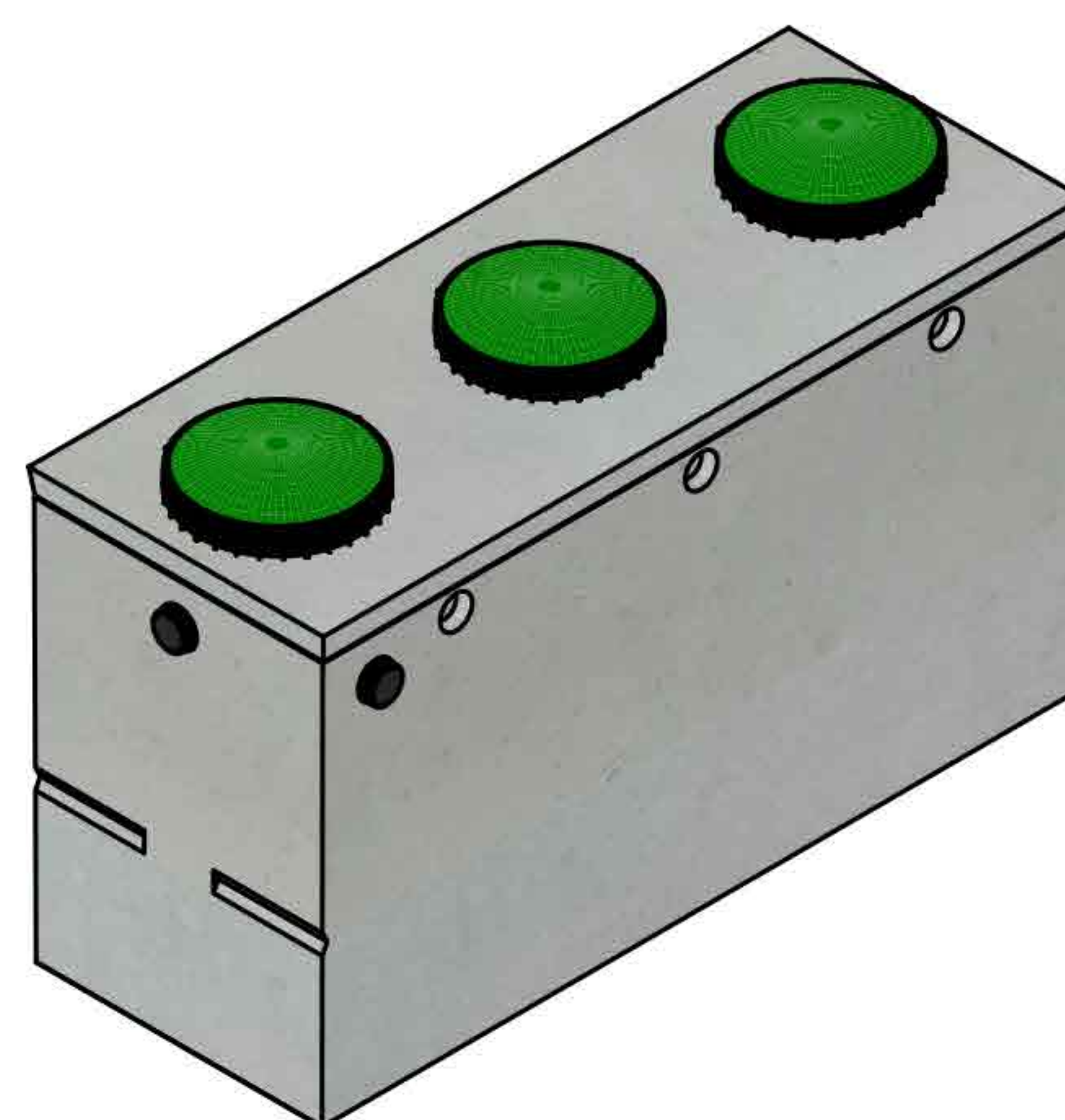


Top View



Isometric View

WORKING CAPACITY: 3078L (677 IG)

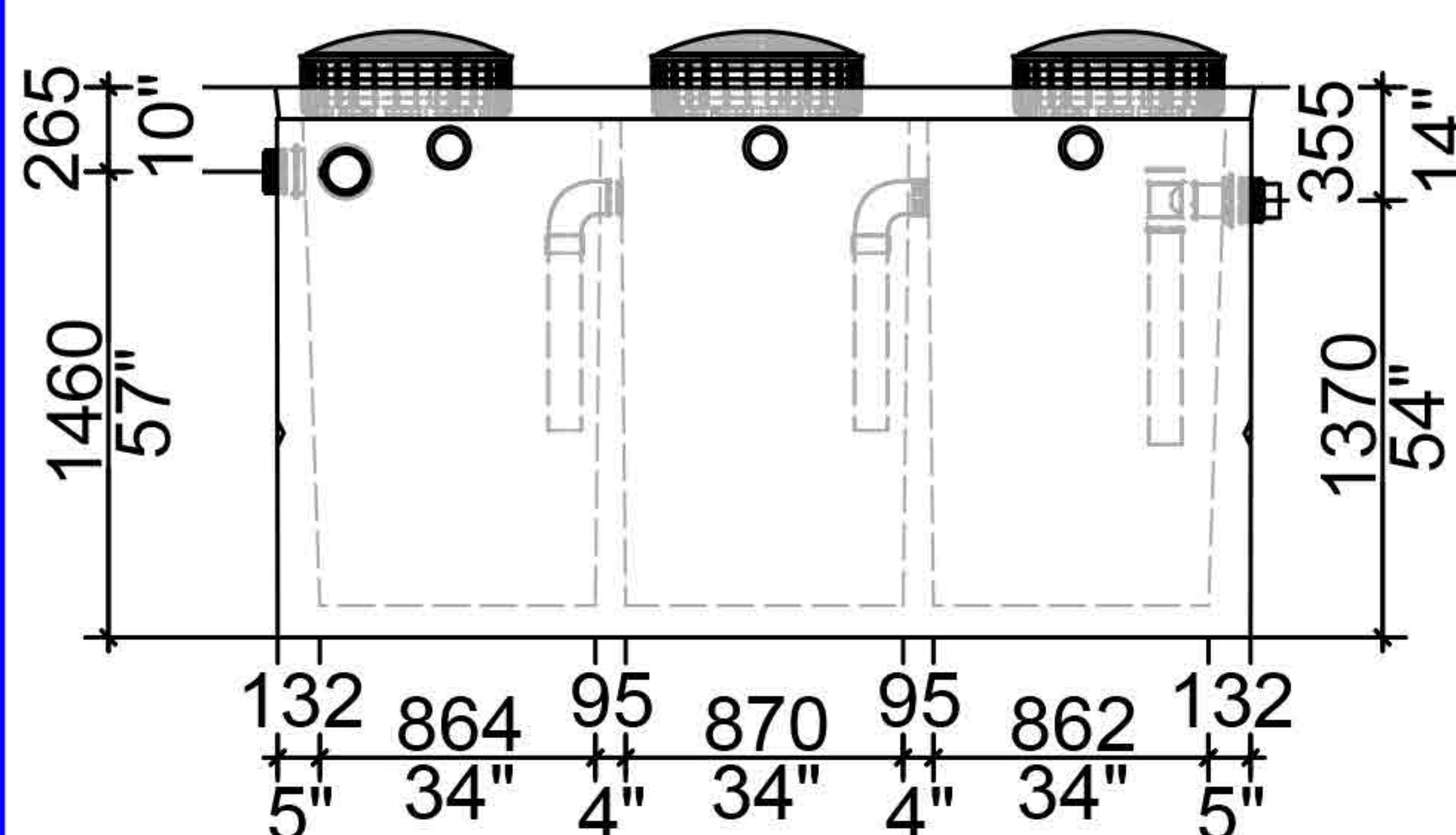
Bare Base Weight.....4318 Kg (9,520 Lbs)

Lid Weight.....648 Kg (1,429 Lbs)

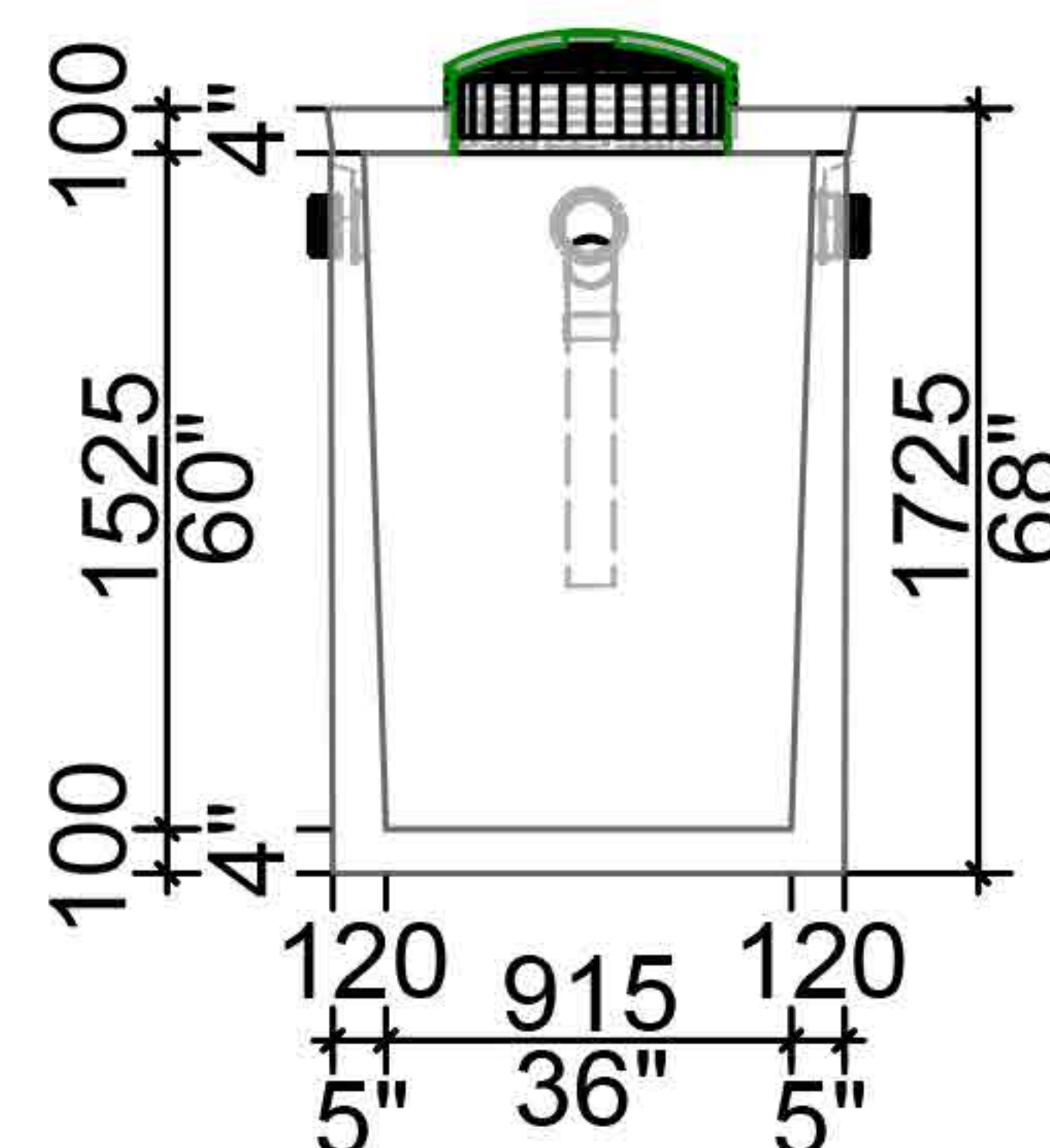
Total Tank Weight.....4966 Kg (10,949 Lbs)

Notes

1. 100mm flow through pipes extending 600mm down
2. standard three 100mm inlets as well as one outlet baffle consisting of 100mm tee and 100 mm pipe (710mm in length)
3. Cast in place 610mm ID plastic riser with plastic lid secured with stainless steel fasteners extending 100mm above top



Side View



End View



20 Victoria St
Uxbridge, ON L9P 1N4
Tel: 905-852-6111
Toll Free: 1-800-263-1297
Fax: 905-852-4340
Info@Newmarketprecast.com
Newmarketprecast.com

3078L Oil and Grease Interceptor

Designed for up to **One Metre** burial over top of tank - Deep burial and vehicle traffic tanks are available upon request. Specialty conformations may be possible

- This tank design is a one piece unit. Top is sealed with a fibrous mastic sealant
- Unit must be vented in regulation with local plumbing codes
- Three compartments separate water from any insoluble liquid of solids having a specific gravity less than that of water
- Individual access lids to each compartment for cleanout
- Tanks are cast with 45 MPA strength concrete at 7 days with 5-7% air
- 3.0 Kg. structural fibre added to concrete. ASTM C 1116
- Lid reinforced with 10m pre-manufactured welded wire.
- Rebar Cover 25mm, CAN/CSA-G30.18.
- Tanks conform to National Standard of Canada CAN/CSA B66-16
- Non-sulphate resistant concrete
- Standard three 100mm Inlets and one 100mm Outlet with flexible rubber connections