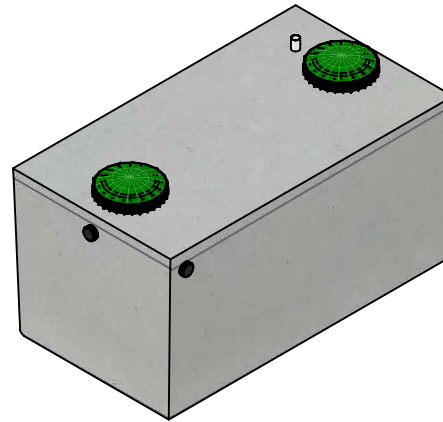


Top View



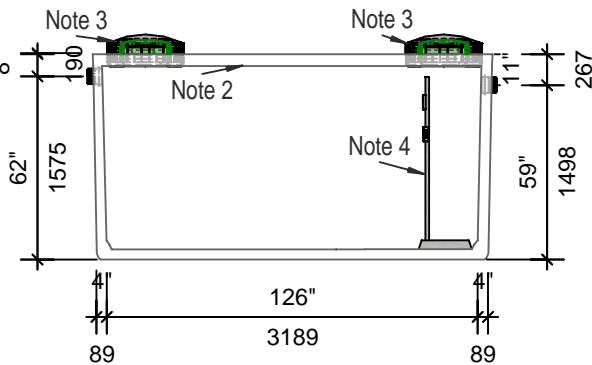
Isometric View

WORKING CAPACITY: 7263L (1598 IG)

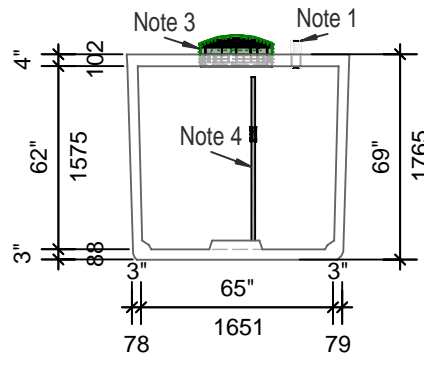
Bare Base Weight.....4290 Kg (9,457 Lbs)  
 Lid Weight.....1550 Kg (3,417 Lbs)  
 Total Tank Weight.....5840 Kg (12,874 Lbs)

Notes

1. 75mm dia. PVC pipe cast-in to facilitate pump installation or venting
2. Water storage capacity to underside of top.... **8,481 Ltrs. (1866 IG)**
- 3 Cast in place 610mm ID Tuf-tite riser with dome lid secured with stainless steel fasteners extending 28mm above top
4. 25mm Float Tree complete with bracket mounted to riser, float bracket and pump pad



Side View



End View

Tank Markings Observed:  
 Inlet & Outlet are Marked  
 Tank is Marked on Tank Lid - Inlet End

**NPCP**  
 HOLDING 7000 L  
 B.D. 1 METRE  
 WC 7263  
 NON SULPHATE  
 AGINP



20 Victoria St  
 Uxbridge, ON L9P 1N4  
 Tel: 905-852-6111  
 Toll Free: 1-800-263-1297  
 Fax: 905-852-4340  
 Info@Newmarketprecast.com  
 Newmarketprecast.com

## Model 7000 Holding 1500 Imperial Gallon

Designed for up to **One Metre** burial over top of tank - Deep burial and vehicle traffic tanks are available upon request. Specialty conformations may be possible

- This tank design is a one piece unit. Top is sealed with a fibrous mastic sealant
- Tanks are cast with 45 MPA strength concrete at 7 days with 5-7% air
- 3.0 Kg. structural fibre added to concrete. ASTM C 1116
- Lid reinforced with 10m pre-manufactured welded wire.
- Rebar Cover 25mm, CAN/CSA-G30.18.
- Tanks conform to National Standard of Canada CAN/CSA B66-16
- Non-sulphate resistant concrete
- Standard three 100mm Inlets and one 100mm Outlet with flexible rubber connections