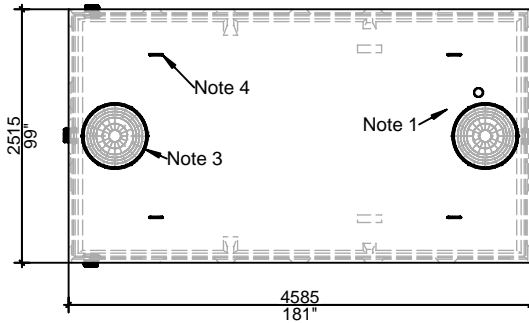
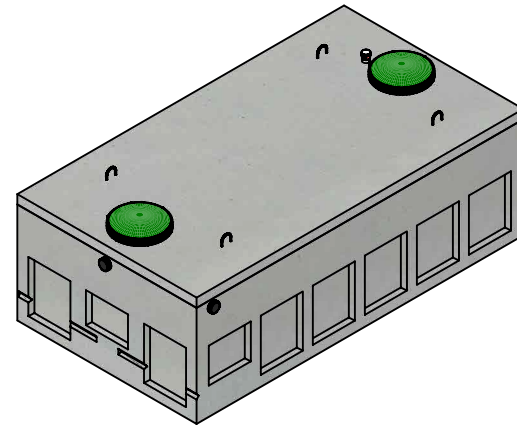


WORKING CAPACITY: 11,298L (2,485 IG)

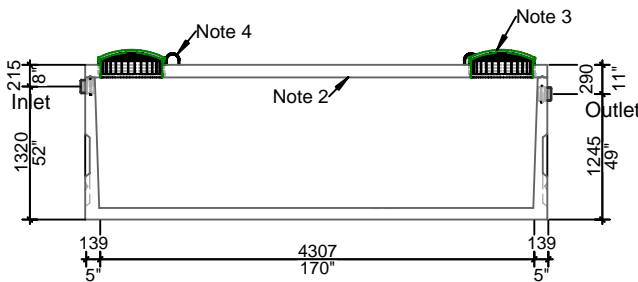
Bare Base Weight..... 7,402 Kg (16,318 Lbs)
 Lid Weight..... 3,279 Kg (7,229 Lbs)
 Total Tank Weight.....10,681 Kg (23,547 Lbs)



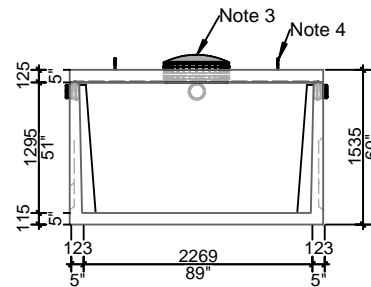
Top View



Isometric View



Side View



End View

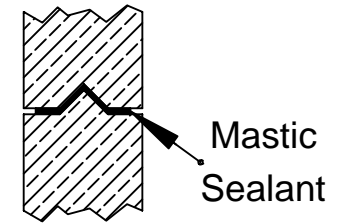
Notes

1. 75mm dia. PVC pipe cast-in to facilitate pump installation or venting
2. Water storage capacity to underside of lid 12,905L (2839 IG)
- 3 Cast in place 610mm ID Tuf-tite riser with dome lid secured with stainless steel fasteners extending 52mm above top
- 4.Lifting Hooks - 4 Points on lid

Tank Markings Observed:
 Inlet & Outlet are Marked

Tank is Marked on Tank Lid - Inlet End

NPCP
 HOLDING 11250 L
 B.D. 1 METRE
 WC 11298
 NON SULPHATE
 AGINP



Tongue and Groove Joint



20 Victoria St
 Uxbridge, ON L9P 1N4
 Tel: 905-852-6111
 Toll Free: 1-800-263-1297
 Fax: 905-852-4340
 Info@Newmarketprecast.com
 Newmarketprecast.com

Model 11250 Holding 2500 Imperial Gallon

Designed for up to **One Metre** burial over top of tank - Deep burial and vehicle traffic tanks are available upon request. Specialty conformations may be possible

- This tank design is installed in multiple units.
- Each unit is tongue and groove design and is sealed with a fibrous mastic sealant
- Tanks are cast with 45 MPA strength concrete at 7 days with 5-7% air
- Steel reinforced with 15m rebar, spaced at 300mm in each direction at 25mm cover.
- Rebar Cover 25mm, CAN/CSA-G30.18.
- Tanks conform to National Standard of Canada CAN/CSA B66-16
- Non-sulphate resistant concrete
- Standard three 100mm Inlets and one 100mm Outlet