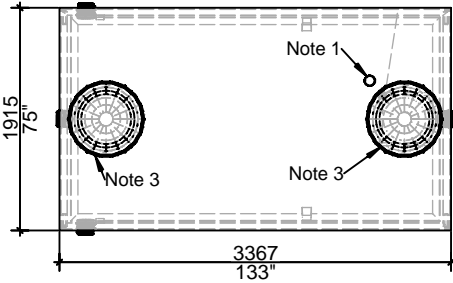


WORKING CAPACITY: 5262L (1157 IG)

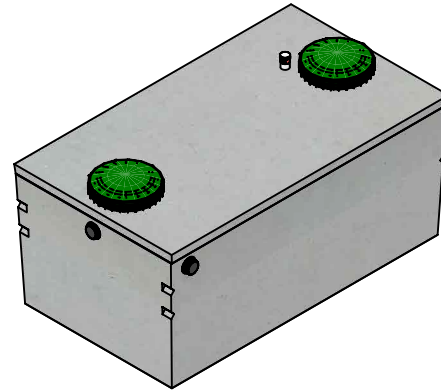
Bare Base Weight.....3911 Kg (8,621 Lbs)
 Lid Weight.....1396 Kg (1,396 Lbs)
 Total Tank Weight.....5307 Kg (10,017 Lbs)

Notes

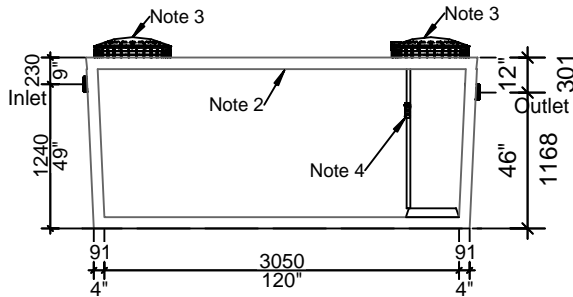
1. 75mm dia. PVC pipe cast-in to facilitate pump installation or venting
2. Water storage capacity to underside of top.... **6,658 Ltrs. (1465 IG)**
- 3 Cast in place 610mm ID Tuf-tite riser with dome lid secured with stainless steel fasteners extending 28mm above top
4. 25mm Float Tree complete with bracket mounted to riser, float bracket and pump pad



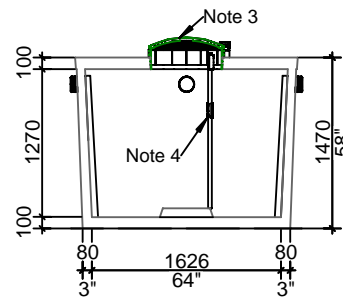
Top View



Isometric View



Side View



End View

Tank Markings Observed:
 Inlet & Outlet are Marked
 Tank is Marked on Tank Lid - Inlet End

NPCP
 HOLDING LO 4500 L
 B.D. 1 METRE
 WC 5262
 NON SULPHATE
 AGINP



20 Victoria St
 Uxbridge, ON L9P 1N4
 Tel: 905-852-6111
 Toll Free: 1-800-263-1297
 Fax: 905-852-4340
 Info@Newmarketprecast.com
 Newmarketprecast.com

Model Low 4500 Holding Low 1000 Imperial Gallon

Designed for up to **One Metre** burial over top of tank - Deep burial and vehicle traffic tanks are available upon request. Specialty conformations may be possible

- This tank design is a one piece unit. Top is sealed with a fibrous mastic sealant
- Tanks are cast with 45 MPA strength concrete at 7 days with 5-7% air
- 3.0 Kg. structural fibre added to concrete. ASTM C 1116
- Lid reinforced with 10m pre-manufactured welded wire.
- Rebar Cover 25mm, CAN/CSA-G30.18.
- Tanks conform to National Standard of Canada CAN/CSA B66-16
- Non-sulphate resistant concrete
- Standard three 100mm Inlets and one 100mm Outlet with flexible rubber connections