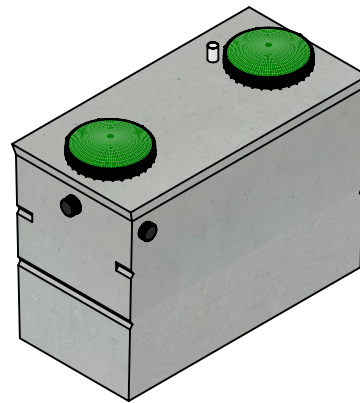


Top View



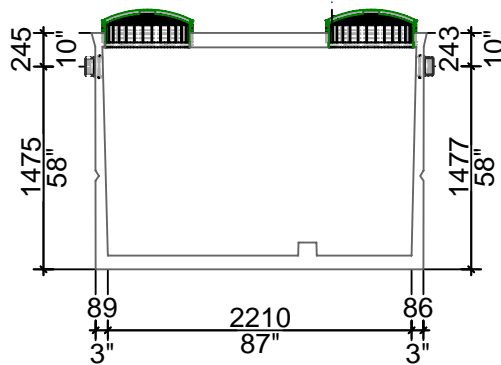
Isometric View

WORKING CAPACITY: 2,816L (619 IG)

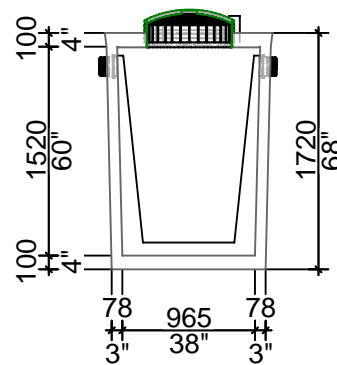
Bare Base Weight.....2,800 Kg (6,173 Lbs)
 Lid Weight.....700 Kg (1,565 Lbs)
 Total Tank Weight.....3,510 Kg (7,738 Lbs)

Notes

1. 75mm dia. PVC pipe cast-in to facilitate pump installation or venting
2. Water Storage Capacity to underside of top 3,150 L (693 IG)
- 3 Cast in place 610mm ID Tuf-tite riser with dome lid secured with stainless steel fasteners extending 55mm above top



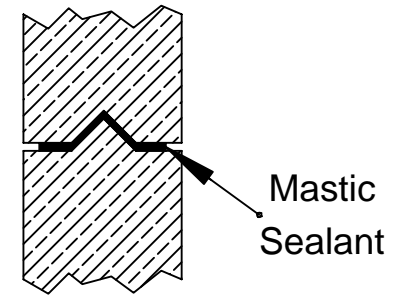
Side View



End View

Tank Markings Observed:
 Inlet & Outlet are Marked
 Tank is Marked on Tank Lid - Inlet End

NPCP
 HOLDING 2700 L
 B.D. 1 METRE
 WC 2816
 NON SULPHATE
 AGINP



Tongue and Groove Joint



20 Victoria St
 Uxbridge, ON L9P 1N4
 Tel: 905-852-6111
 Toll Free: 1-800-263-1297
 Fax: 905-852-4340
 Info@Newmarketprecast.com
 Newmarketprecast.com

Model 2700 Pump Chamber 600 Imperial Gallon

Designed for up to **One Metre** burial over top of tank - Deep burial and vehicle traffic tanks are available upon request. Specialty conformations may be possible

- This tank design is installed in one piece.
- Top is sealed to base with a fibrous mastic sealant
- Tanks are cast with 45 MPA strength concrete at 7 days with 5-7% air
- 3.0 Kg. structural fibre added to concrete. ASTM C 1116
- Lid has 10m Pre-manufactured welded wire
- Rebar Cover 25mm, CAN/CSA-G30.18.
- Tanks conform to National Standard of Canada CAN/CSA B66-16
- Non-sulphate resistant concrete
- Standard three 100mm Inlets and one 100mm Outlet