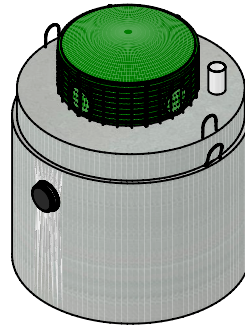


Top View



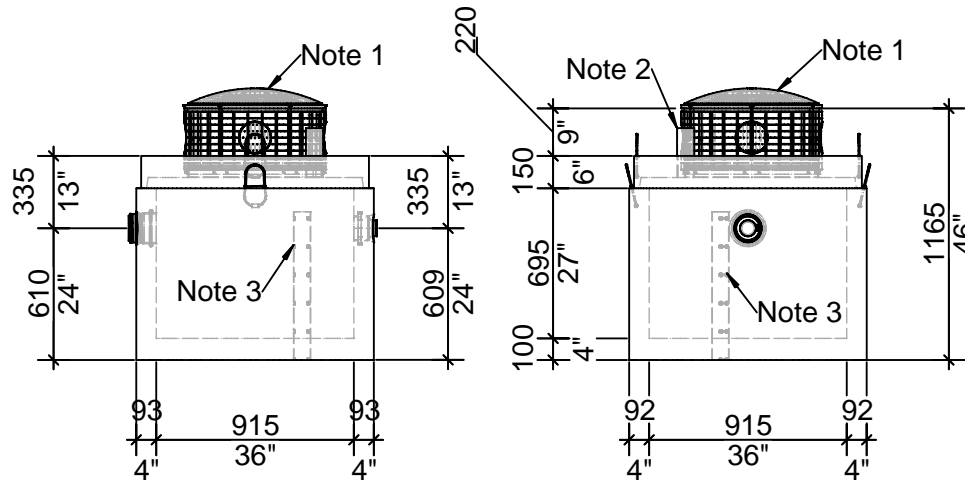
Isometric View

WORKING CAPACITY: 410L (90 IG)

Bare Base Weight.....478 Kg (1,054 Lbs)
 Lid Weight.....148 Kg (327 Lbs)
 Total Tank Weight.....616 Kg (1,371 Lbs)

Notes

1. Cast in place 610mm ID Tuf-tite riser with dome lid secured with stainless steel fasteners extending 28mm above top
2. 75mm diameter PVC pipe cast in to facilitate pump installation
3. 75mm perforated pipe cast in for float tree



Side View

End View

Tank Markings Observed:
 Inlet & Outlet are Marked
 Tank is Marked on Tank Lid - Inlet End

NPCP
 410L Pump Tank
 B.D. 1 METRE
 WC 410
 NON SULPHATE
 AGINP



20 Victoria St
 Uxbridge, ON L9P 1N4
 Tel: 905-852-6111
 Toll Free: 1-800-263-1297
 Fax: 905-852-4340
 Info@Newmarketprecast.com
 Newmarketprecast.com

Model 410 Pump Chamber 90 Imperial Gallon

Designed for up to **One Metre** burial over top of tank - Deep burial and vehicle traffic tanks are available upon request. Specialty conformations may be possible

- This tank design is installed in one piece unit.
- Top is sealed with a fibrous mastic sealant
- Tanks are cast with 45 MPA strength concrete at 7 days with 5-7% air
- Steel reinforced with 10m rebar around top of base and lid.
- Rebar Cover 25mm, CAN/CSA-G30.18.
- 3KG Structural fibre added to concrete
- Non-sulphate resistant concrete
- Standard one 100mm Inlet and one 50mm/38mm Outlet