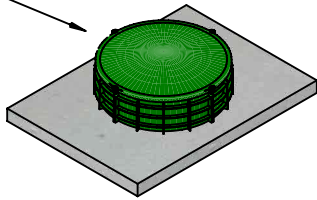
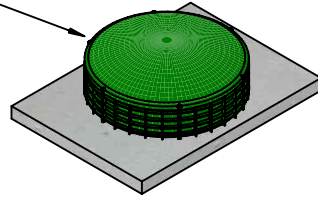


16" Dia Tuf-Tite

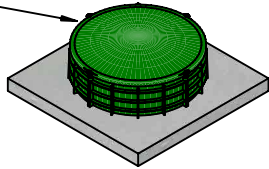


20" Dia Tuf-Tite

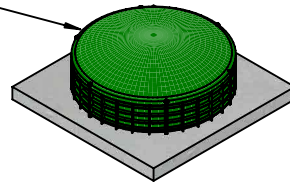


24" x 28"

16" Dia Tuf-Tite



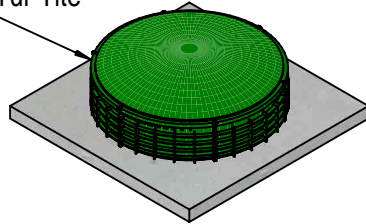
20" Dia Tuf-Tite



24" x 24"

26" x 26"

24" Dia Tuf-Tite



33" x 33"

Conversion Covers Cast with Tuf-Tite Risers

24" x 24"	30 Kg	(66 Lbs)
26" x 26"	47 Kg	(104 Lbs)
24" x 28" 16TT.....	50 Kg	(110 Lbs)
24" x 28" 20TT.....	38 Kg	(84 Lbs)
33" x 33"	29 Kg	(64 Lbs)

Notes

1. Additional risers available in 12" High, 6" High and 3" High for variable grade requirements.
2. Dome cover provided with each conversion cover



20 Victoria St
 Uxbridge, ON L9P 1N4
 Tel: 905-852-6111
 Toll Free: 1-800-263-1297
 Fax: 905-852-4340
 Info@Newmarketprecast.com
 Newmarketprecast.com

Conversion Covers

- Cast with 45 MPA strength concrete at 7 days with 5-7% air
- 3.0 Kg. structural fibre added to concrete. ASTM C 1116
- Reinforced with pre-manufactured welded wire.
- Rebar Cover 25mm, CAN/CSA-G30.18.
- Non-sulphate resistant concrete