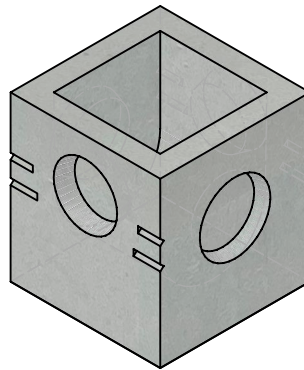


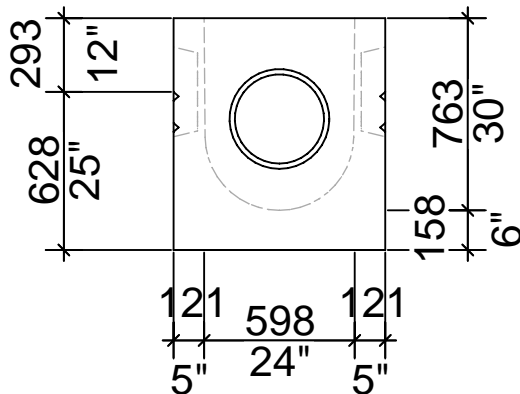
Top View



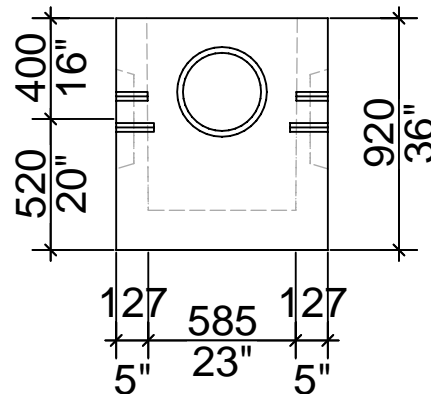
Isometric View

CAPACITY: 245L (54 IG)

Total Catch Basin Weight.....893 Kg (1,969 Lbs)



Side View



End View

20 Victoria St
Uxbridge, ON L9P 1N4
Tel: 905-852-6111
Toll Free: 1-800-263-1297
Fax: 905-852-4340
Info@Newmarketprecast.com
Newmarketprecast.com

Short Catch Basin

Designed for H20 Vehicle Traffic. Specialty conformations may be possible

- This Catch Basins design is a one piece unit.
- Cast with 45 MPA strength concrete at 7 days with 5-7% air
- Steel reinforced with 10m rebar around top of product.
- Rebar Cover 25mm CAN/CSA-G30.18.
- 3 Kg. structural fibre added to concrete. ASTM C 1116
- Non-sulphate resistant concrete
- Two 254mm (10") Knockouts and two 356mm (14") Knockouts
- Grade rings may be added to bring to height