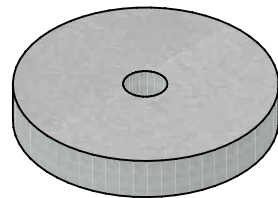


Top View



Isometric View



Side View

Total Weight.....29 Kg (64 Lbs)

Notes

1. 3" Centre Hole for chain connection  
\*chain provided by others\*
2. Multiple Anchors can be chained together for more weight



20 Victoria St  
 Uxbridge, ON L9P 1N4  
 Tel: 905-852-6111  
 Toll Free: 1-800-263-1297  
 Fax: 905-852-4340  
 Info@Newmarketprecast.com  
 Newmarketprecast.com

## Dock Anchor 18" Dia - 3" High

- This Dock Anchor design is a one piece unit.
- Cast with 45 MPA strength concrete at 7 days with 5-7% air
- Steel reinforced with 10m rebar around top of product.
- Rebar Cover 25mm CAN/CSA-G30.18.
- 3 Kg. structural fibre added to concrete. ASTM C 1116
- Non-sulphate resistant concrete